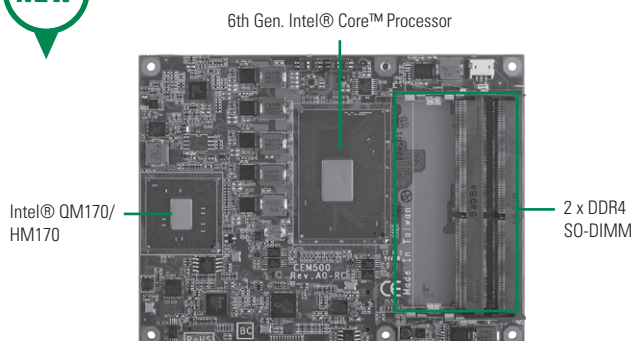
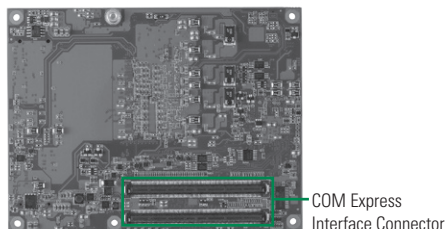


CEM500

6th Generation Intel® Core™ i7/i5/i3 & Celeron® Processor COM Express Type 6 Module with Intel® QM170/HM170



- 6th generation Intel® Core™ i7/i5/i3 & Celeron® processor (Skylake-H)
- Intel® QM170/HM170 chipset
- 2 DDR4-2133 SO-DIMMs max. up to 32 GB
- Max. up to 24 lanes of PCIe
- 4 SATA-600
- 4 USB 3.0 and 8 USB 2.0
- Supports TPM function



▲ Rear view

System

CPU	6th generation Intel® Core™ processor (Skylake) with i7-6820EQ (45W), i5-6440EQ (45W), i3-6100E (35W)
System Memory	2 x DDR4-2133 SO-DIMMs support max. up to 32 GB
Chipset	Intel® QM170/HM170
BIOS	AMI uEFI with Intel® Active Management Technology 11.0 supported
SSD	N/A
Watchdog Timer	255 levels, 1~255 sec.
Expansion Interface	1 x PCIe x16 v3.0 8 x PCIe x1 (7 x1 while internal MAC is connected)
Battery Lithium	N/A
Power Input	ATX: +12V, +5VSB; AT: +12V
Size	125 x 95 mm
Board Thickness	2.0 mm
Temperature	-40°C ~ +85°C (-40°F ~ +185°F), operation
Operation Humidity	10% ~ 95% relative humidity, non-condensing

I/O

MIO	1 x LPC interface 1 x SPI interface 1 x I ² C interface 2 x TX/RX serial interface
SATA	4 x SATA-600 support RAID 0/1/5/10
Hardware Monitoring	Yes
Ethernet	1 port as 10/100/1000Mbps supports Wake-on-LAN, PXE Boot ROM with Intel® i219LM
Audio	HD link interface to baseboard for Codec
USB	4 x USB 3.0 and 8 x USB 2.0
TPM	ST for trusted platform
SMBus	Yes
Digital I/O	4 channels IN & 4 channels OUT
Smart Battery	Yes

Display

Chipset	Intel® Gen 9 Graphics Gfx APIs - DX11/12, OCL2.x, OGL 4.3/4.4 3 independent displays
Display Interface	1 x LVDS; 18/24-bit single/dual channel (optional with eDP) 3 x DDI (DP/HDMI/DVI); 1 x DDI optional w/VGA

Packing List

Quick installation guide, user's manual/utility CD

Ordering Information

Standard	
CEM500PG-i7-6820EQ	COM Express type 6 module with Intel® Core™ i7-6820EQ 2.8 GHz, DDI/LVDS, GbE LAN, USB 3.0 and TPM
CEM500PG-i5-6440EQ	COM Express type 6 module with Intel® Core™ i5-6440EQ 2.7 GHz, DDI/LVDS, GbE LAN, USB 3.0 and TPM
CEM500PG-i3-6100E	COM Express type 6 module with Intel® Core™ i3-6100E 2.7GHz, DDI/LVDS, GbE LAN, USB 3.0 and TPM
Optional	
CEB94011	ATX form factor type 6 evaluation board

Архангельск (8182)63-90-72
Астана +7(7172)727-132
Белгород (4722)40-23-64
Брянск (4832)59-03-52
Владивосток (423)249-28-31
Волгоград (844)278-03-48
Вологда (8172)26-41-59
Воронеж (473)204-51-73
Екатеринбург (343)384-55-89
Иваново (4932)77-34-06
Ижевск (3412)26-03-58
Казань (843)206-01-48

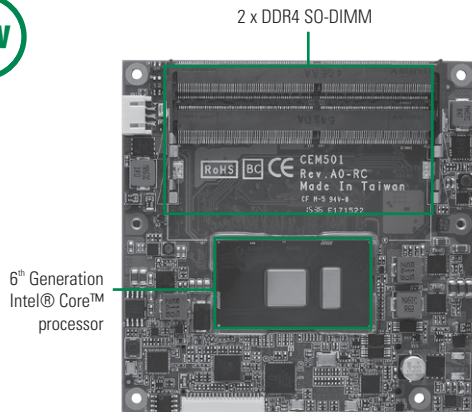
Калининград (4012)72-03-81
Калуга (4842)92-23-67
Кемерово (3842)65-04-62
Киров (8332)68-02-04
Краснодар (861)203-40-90
Красноярск (391)204-63-61
Курск (4712)77-13-04
Липецк (4742)52-20-81
Магнитогорск (3519)55-03-13
Москва (495)268-04-70
Мурманск (8152)59-64-93
Набережные Челны (8552)20-53-41

Нижний Новгород (831)429-08-12
Новокузнецк (3843)20-46-81
Новосибирск (383)227-86-73
Орел (4862)44-53-42
Оренбург (3532)37-68-04
Пенза (8412)22-31-16
Пермь (342)205-81-47
Ростов-на-Дону (863)308-18-15
Рязань (4912)46-61-64
Самара (846)206-03-16
Санкт-Петербург (812)309-46-40
Саратов (845)249-38-78

Смоленск (4812)29-41-54
Сочи (862)225-72-31
Ставрополь (8652)20-65-13
Тверь (4822)63-31-35
Томск (3822)98-41-53
Тула (4872)74-02-29
Тюмень (3452)66-21-18
Ульяновск (8422)24-23-59
Уфа (347)229-48-12
Челябинск (351)202-03-61
Череповец (8202)49-02-64
Ярославль (4852)69-52-93

CEM501

6th Generation Intel® Core™ i7/i5/i3
Processor COM Express Type 6 Module



System

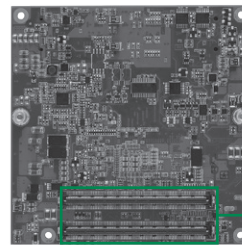
CPU	6th generation Intel® Core™ processor with i7-6600U 2.6 GHz, i5-6300U 2.4 GHz, i3-6100U 2.3 GHz (Skylake-U) onboard
System Memory	2 x 260pin DDR4-2133 SO-DIMM max. up to 32 GB
Chipset	SoC integrated
BIOS	AMI uEFI
SSD	N/A
Watchdog Timer	255 levels, 1~255 sec. or min.
Expansion Interface	6 lanes of PCI Express Gen. 3.0
Battery Lithium	N/A
Power Input	ATX: +12V, +5VSB AT: +12V
Size	95 x 95 mm
Board Thickness	2.0 mm
Temperature	-20°C ~ +70°C (-4°F ~ 158°F), operation
Operation Humidity	10% ~ 95% relative humidity, non-condensing

I/O

MIO	1 x LPC interface 1 x SPI interface 2 x Serial TX/RX 1 x I ² C
SATA	3 x SATA-600
Hardware Monitoring	Yes
Ethernet	1 port as 10/100/1000Mbps supports Wake-on-LAN, PXE Boot ROM with Intel® i219LM
Audio	HD link interface to baseboard for Codec
USB	4 x USB 3.0 and 8 x USB 2.0
TPM	Yes
SMBus	Yes
Digital I/O	4 channels IN & 4 channels OUT (SDIO optional)
Battery Support	Yes

Features

- 6th generation Intel® Core™ i7/i5/i3 processor (Skylake-U)
- 2 DDR4-2133 SO-DIMM max. up to 32 GB memory
- Max. up to 6 lanes of PCI Express
- 3 SATA-600
- 4 USB 3.0 and 8 USB 2.0



COM Express Interface Connector

▲ Rear view

Display

Chipset	Intel® Gen 9 Graphics Engine support Gfx - DX12.0, OCL2.0, OGL4.3
Display Interface	2 x DDI (DP/HDMI/DVI). The 2nd DDI could be configured to VGA (optional). 1 x LVDS; 18/24-bit dual channel (eDP optional)

Packing List

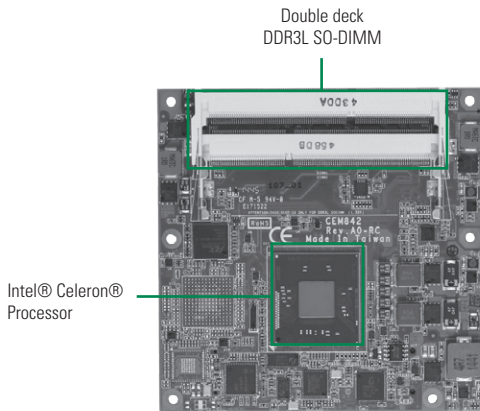
Quick installation guide

Ordering Information

Standard	
CEM501PG-i7-6600U	COM Express type 6 module with 6th generation Intel® Core™ i7-6600U (2.6 GHz), DP/LVDS, 10/100/1000 Mbps Ethernet, USB 3.0 and TPM
CEM501PG-i5-6300U	COM Express type 6 module with 6th generation Intel® Core™ i5-6300U (2.4 GHz), DP/LVDS, 10/100/1000 Mbps Ethernet, USB 3.0 and TPM
CEM501PG-i3-6100U	COM Express type 6 module with 6th generation Intel® Core™ i3-6100U (2.3 GHz), DP/LVDS, 10/100/1000 Mbps Ethernet, USB 3.0 and TPM

CEM842

Intel® Celeron® Processor J1900/N2807
COM Express Type 6 Compact Module



System

CPU	Intel® Celeron® processor J1900 2 GHz or Celeron® N2807 1.58 GHz onboard
System Memory	2 x 204-pin SO-DIMM support DDR3L-1066/1333 up to 8 GB
Chipset	SoC integrated
BIOS	AMI uEFI
SSD	N/A
Watchdog Timer	255 levels, 1~255 sec. or min.
Expansion Interface	Max. up to 6 lanes of PCIe
Battery Lithium	N/A
Power Input	ATX 12V/5VSB or AT 12V
Size	95 x 95 mm
Board Thickness	2.0 mm
Temperature	0° ~ +60°C (32°F ~ 140°F), operation
Operation Humidity	10% ~ 95% relative humidity, non-condensing

I/O

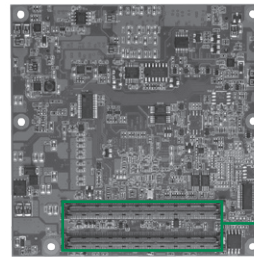
MIO	1 x LPC interface 1 x SPI interface
SATA	2 x SATA-300
Hardware Monitoring	Yes
Ethernet	1 port as 10/100/1000Mbps supports Wake-on-LAN, PXE Boot ROM with Intel® i210AT
Audio	HD link interface to baseboard for Codec
USB	8 x USB 2.0 and 1 x USB 3.0
TPM	ST33TPM12
SMBus	Yes
Digital I/O	4 channels IN & 4 channels OUT

Display

Chipset	Intel® HD graphics (Gen 7 Gfx) display engine Gfx APIs – DX11, OCL 1.2, OGL 3.0 2 independent displays
Display Interface	1 x VGA 1 x LVDS; 18/24-bit single/dual channel 1 x DDI (DP, HDMI, DVI)

Features

- Intel® Quad/ Dual Core Celeron® processor (Bay Trail)
- 2 DDR3L-1066/1333 SO-DIMMs max. up to 8 GB
- Max. up to 6 lanes of PCIe
- 2 SATA-300 interfaces
- 8 USB 2.0 and 1 USB 3.0 ports



▲ Rear view

Packing List

Quick installation guide, user's manual/utility CD

Ordering Information

Standard

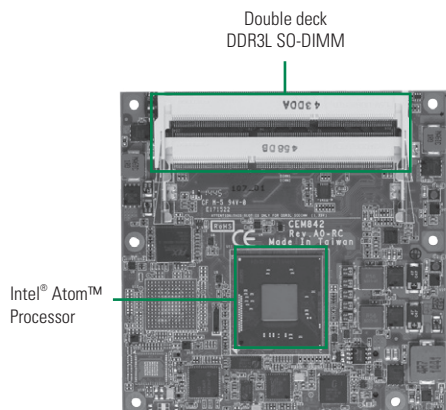
CEM842PVG-N2807	COM Express type 6 with Intel® Celeron® N2807, DDI/VGA/LVDS, 10/100/1000Mbps Ethernet, USB 3.0 and TPM
CEM842PVG-J1900	COM Express type 6 with Intel® Celeron® J1900, DDI/VGA/LVDS, 10/100/1000Mbps Ethernet, USB 3.0 and TPM

Optional Accessories

CEB94006	ATX form factor type 6 evaluation board
5078D841100E	CEM841/2/3 Heatspreader
5078D842200E	CEM841/2/3 Heatsink without fan

CEM843

Intel® Atom™ Processor E3845 COM Express Type 6 Compact Module



System

CPU	Intel® Atom™ processor E3845 1.91 GHz onboard
System Memory	2 x 204-pin SO-DIMM support DDR3L-1066/1333 up to 8 GB
Chipset	SoC integrated
BIOS	AMI uEFI
SSD	N/A
Watchdog Timer	255 levels, 1~255 sec. or min.
Expansion Interface	Max. up to 6 lanes of PCIe
Battery Lithium	N/A
Power Input	ATX: 12V/5VSB, AT: 12V
Size	95 x 95 mm
Board Thickness	2.0 mm
Temperature	-40°C ~ +85°C (-40°F ~ +185°F), operation
Operation Humidity	10% ~ 95% relative humidity, non-condensing

I/O

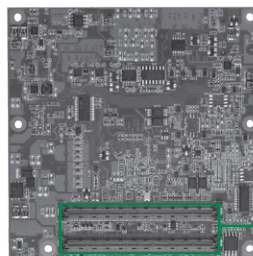
MIO	1 x LPC interface 1 x SPI interface
SATA	2 x SATA-300
Hardware Monitoring	Yes
Ethernet	1 port as 10/100/1000Mbps supports Wake-on-LAN, PXE Boot ROM with Intel® i210IT
Audio	HD link interface to baseboard for Codec
USB	8 x USB 2.0 and 1 x USB 3.0
TPM	ST33TPM12
SMBus	Yes
Digital I/O	4 channels IN & 4 channels OUT

Display

Chipset	Intel® HD graphics (Gen 7 Gfx) display engine Gfx APIs – DX11, OCL 1.2, OGL 3.0 2 independent displays
Display Interface	1 x VGA 1 x LVDS; 18/24-bit single/dual channel 1 x DDI (DP, HDMI, DVI)

Features

- Intel® Quad Core Atom™ processor E3845 (Bay Trail)
- 2 DDR3L-1066/1333 SO-DIMMs max. up to 8 GB
- Max. up to 6 lanes of PCIe
- 2 SATA-300 ports
- 8 USB 2.0 and 1 USB 3.0 ports



▲ Rear view

COM Express Interface Connector

Packing List

Quick installation guide, user's manual/utility CD

Ordering Information

Standard

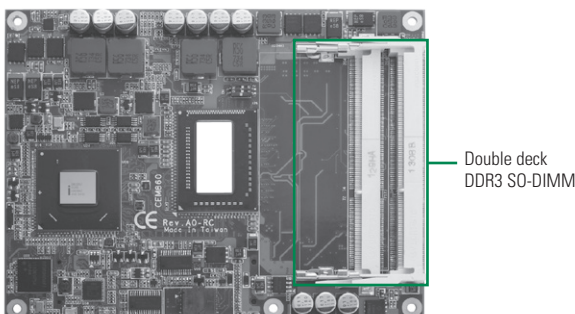
CEM843PVG-E3845 (P/N: E38D843100)	COM Express type 6 with Intel® Atom™ E3845 1.91GHz, DDI/VGA/LVDS, 10/100/1000Mbps Ethernet, USB 3.0 and TPM
-----------------------------------	---

Optional Accessories

CEB94006 (P/N: E394006100)	ATX form factor type 6 evaluation baseboard
5078D841100E	CEM841/2/3 Heatspreader
5078D842200E	CEM841/2/3 Heatsink without fan

CEM860

Intel® Core™ i7/i5/i3 COM Express™ Type 6 Module with Intel® QM67



Double deck
DDR3 SO-DIMM



System

CPU	2nd generation Intel® Quad/ Dual Core™ i7/i5/i3 & Celeron® processor
System Memory	2 x 204-pin SO-DIMM support DDR3-1066/1333 max. up to 16 GB
Chipset	Intel® QM67
BIOS	AMI UEFI BIOS
SSD	N/A
Watchdog Timer	255 levels, 1~255 sec.
Expansion Interface	1 x PCIe x16 graphics port 6 x PCIe lanes support for 6 x PCIe x1 or 1 x PCIe x4 + 2 x PCIe x1 devices
Battery	N/A
Power Requirements	Differentiate by onboard processor
Size	125 x 95 mm
Board Thickness	1.6 mm
Temperature	0° ~ +60°C (32°F ~ 140°F), operation
Operation Humidity	10% ~ 95% relative humidity, non-condensing

I/O

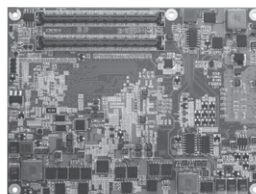
MIO	1 x LPC interface 1 x SPI interface
SATA	2 x SATA-600, 2 x SATA-300
Hardware Monitoring	N/A
Ethernet	1 port as 10/100/1000Mbps supports Wake-on-LAN, RPL/PXE Boot ROM with Intel® 82579LM
Audio	HD link interface to baseboard for external Codec
USB	8 x USB 2.0, 2 x USB 3.0 (optional)
TPM 1.2	Infineon SLB9635 for trusted platform (optional)
SMBus	Yes
Digital I/O	4 channels IN & 4 channels OUT

Display

Chipset	Intel® HD graphics 3000 code
Memory Size	Depending on integrtd GPU
Display Interface	1 x VGA 1 x LVDS; 18/24-bit single/dual channel 3 x DDI (SDVO, DP, HDMI, DVI)

Features

- 2nd generation Intel® Core™ processor
- Intel® QM67 chipset
- 2 DDR3-1066/1333 SO-DIMMs max. up to 16 GB
- 22 lanes of PCIe Gen 2 at 5GT/s
- 2 SATA-600 & 2 SATA-300
- 8 USB 2.0 ports
- 2 USB 3.0 ports (optional)
- TPM 1.2 supported (optional)



▲ Rear view

Packing List

Quick installation guide, user's manual/utility CD

Ordering Information

Standard	
CEM860DG-i5-2515E (P/N: E380860101)	COM Express type 6 module with Intel® Core™ i5-2515E 3.1 GHz, VGA/LVDS, 10/100/1000Mbps Ethernet, USB 3.0 and TPM (recommended cooler P/N: E39J000101)
CEM860DG-i3-2340UE (P/N: E380860103)	COM Express type 6 module with Intel® Core™ i3-2340UE 1.3 GHz, VGA/LVDS, 10/100/1000Mbps Ethernet, USB 3.0 and TPM (recommended cooler P/N: E39J000101)
CEM860DG-B810E (P/N: E380860104)	COM Express type 6 module with Intel® Celeron® B810E 1.6 GHz, VGA/LVDS, 10/100/1000Mbps Ethernet, TPM (recommended cooler P/N: E39J000102)
CEM860DG-i7-2715QE (P/N: E380860100)	COM Express type 6 module with Intel® Core™ i7-2715QE 3 GHz, VGA/LVDS, 10/100/1000Mbps Ethernet, USB 3.0 and TPM (recommended cooler P/N: E39J000100)
CEM860DG-i7-2610UE (P/N: E380860102)	COM Express type 6 module with Intel® Core™ i7-2610UE 2.4 GHz, VGA/LVDS, 10/100/1000Mbps Ethernet and TPM (recommended cooler P/N: E39J000100)
CEM860DG-i7-2610UE WT	COM Express type 6 module with Intel® i7-2610UE 2.4 GHz, VGA/LVDS, 10/100/1000Mbps Ethernet, TPM and W.T. (-40° ~ +80°C) (recommended cooler P/N: E39J000100)

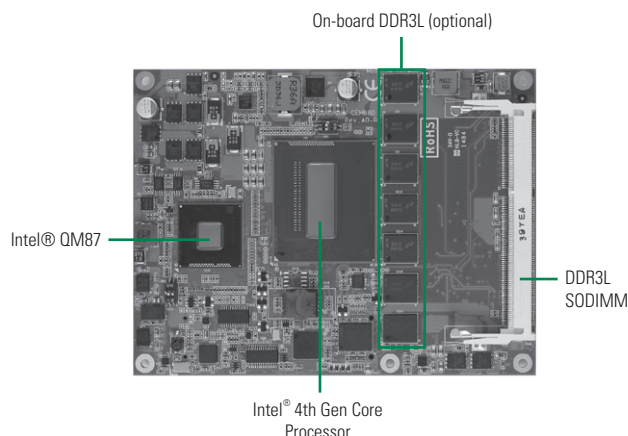
Cooler with heatspreader

CEB94006	ATX form factor type 6 baseboard
E39J000100	TS000-CEM860-i7 with fan RC (up to 45W Core™ i CPU)
E39J000101	TS000-CEM860-i5/ i3 with fan RC (up to 35W Core™ i CPU)
E39J000102	TS000-CEM860-celeron with fan RC (up to 35W Core™ i CPU)

* W.T.: Wide Temperature

CEM880

5th Generation Intel® Core™ i7 & 4th Intel® Core™ i7/i5/i3 & Celeron® Processor COM Express Type 6 Module with Intel® QM87



System

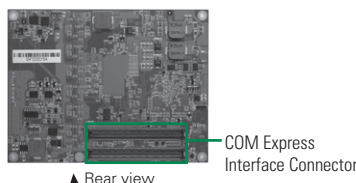
CPU	5th generation Intel® Core™ i processor (Broadwell), i7-5700EQ (47W), i7-5850EQ (47W) & 4th generation Intel® Core™ processor (Haswell/Haswell Refresh) with i7-4700EQ (47W), i5-4422E (25W), i3-4110E (37W), Celeron® 2000E (37W)
System Memory	1st bank as on-board extended temperature DDR3L chips up to 4 GB (optional) 1 x 204-pin SO-DIMM supports DDR3L up to max. up to 8 GB
Chipset	Intel® QM87
BIOS	AMI uEFI with Intel® Active Management Technology 9.0 supported
Watchdog Timer	255 levels, 1-255 sec.
Expansion Interface	1 x PCIe x16 Gen 3.0 8 x PCIe lanes (7 x lanes while internal LAN is connected)
Battery Lithium	N/A
Power Requirements	TBD
Size	125 x 95 mm
Board Thickness	2.0 mm
Temperature	-40°C ~ +85°C (-40°F ~ +185°F), operation
Operation Humidity	10% ~ 95% relative humidity, non-condensing

I/O

MIO	1 x LPC interface 1 x SPI interface
SATA	4 x SATA-600, support Intel® Rapid Start Technology Intel® Smart Response Technology
Hardware Monitoring	Yes
Ethernet	1 port as 10/100/1000Mbps supports Wake-on-LAN, PXE Boot ROM with Intel® i218LM
Audio	HD link interface to baseboard for Codec
USB	8 x USB 2.0 and 4 x USB 3.0
TPM 1.2	ST for trusted platform
SMBus	Yes
Digital I/O	4 channels IN & 4 channels OUT

Features

- 5th generation Intel® Core™ i7 (Broadwell) & 4th generation Intel® Quad/Dual Core™ i7/i5/i3 & Celeron® processor (Haswell/Haswell Refresh)
- Intel® QM87 chipset
- On-board 4 GB DDR3L (optional) and 1 DDR3L SO-DIMM up to 8 GB
- Max. up to 24 lanes of PCIe
- 4 SATA-600 support RAID 0/1/5/10
- 4 USB 3.0
- TPM support



Display

Chipset	Intel® Iris Pro Graphic 6200 (i7-5850EQ) Intel® HD Graphic 5600 (i7-5700EQ) Intel® HD Graphic 4600 (i7-4700EQ) Intel® InTru™ 3D, Intel® Quick Sync Video 2.0, Intel® Clear Video HD Technology Gfx APIs - DX11.2, OCL1.1, OGL 4.3 3 independent displays
Memory Size	DVMT Gfx physical memory up to 256 MB DVMT Gfx pre-allocated memory up to 1024 MB
Display Interface	1 x VGA 1 x LVDS; 18/24-bit single/dual channel 3 x DDI (DP, HDMI, DVI)

Packing List

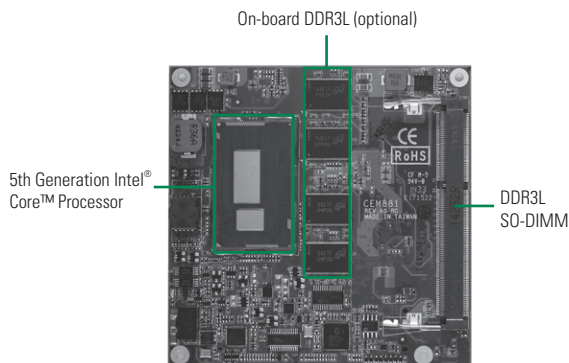
Quick installation guide, user's manual/utility CD

Ordering Information

Standard	
CEM880PVG-i7-4700EQ (P/N: E38D880100)	COM Express type 6 module with Intel® Core™ i7-4700EQ 2.4 GHz, VGA/LVDS/DP, 10/100/1000Mbps Ethernet, USB 3.0 and TPM
CEM880PVG-i5-4422E (P/N: E38D880103)	COM Express type 6 module with Intel® Core™ i5-4422E 1.8 GHz, VGA/LVDS/DP, 10/100/1000Mbps Ethernet, USB 3.0 and TPM
CEM880PVG-i3-4110E (P/N: E38D880104)	COM Express type 6 module with Intel® Core™ i3-4110E 2.6 GHz, VGA/LVDS/DP, 10/100/1000Mbps Ethernet, USB 3.0 and TPM
CEM880PVG-CEL-2000E (P/N: E38D880105)	COM Express type 6 module with Intel® Celeron® 2000E 2.2 GHz, VGA/LVDS/DP, 10/100/1000Mbps Ethernet, USB 3.0 and TPM
CEM880PVG-i7-5850EQ (P/N: E38D880107)	COM Express type 6 module with Intel® Core™ i7-5850EQ 2.7 GHz, VGA/LVDS/DP, 10/100/1000Mbps Ethernet, USB 3.0 and TPM
CEM880PVG-i7-5700EQ (P/N: E38D880108)	COM Express type 6 module with Intel® Core™ i7-5700EQ 2.6 GHz, VGA/LVDS/DP, 10/100/1000Mbps Ethernet, USB 3.0 and TPM
Optional	
CEM94006 (P/N: E394006100)	ATX from factor type 6 evaluation board
TS001-CEM880 (P/N: E39J001100)	High profile heatsink with fan (L=95 mm, W=125 mm, H=27 mm)
TS002-CEM880 (P/N: E39J002100)	Low profile heatsink with fan (L=95 mm, W=125 mm, H=20 mm)
TS003-CEM880 (P/N: E39J003100)	High profile heatsink without fan (L=95 mm, W=125 mm, H=27 mm)
TS004-CEM880 (P/N: E39J004100)	Heatspreader for CEM880

CEM881

COM Express Type 6 Compact Module with 5th/4th Generation Intel® Core™ i7/i5/i3 & Celeron® Processor



System

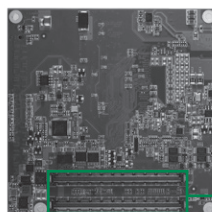
CPU	5th/4th generation Intel® Core™ i7/i5/i3 & Celeron® processor (Broadwell/Haswell)
System Memory	1st bank as on-board extended temperature non-ECC DDR3L chips max. up to 4 GB (optional) 2nd bank as non-ECC DDR3L SO-DIMM max. up to 8 GB
Chipset	SoC integrated
BIOS	AMI uEFI
SSD	N/A
Watchdog Timer	255 levels, 1~255 sec. or min.
Expansion Interface	4 lanes of PCIe
Battery Lithium	N/A
Power Requirements	TBD
Size	95 x 95 mm
Board Thickness	2.0 mm
Temperature	-40°C ~ +85°C (-40°F ~ +185°F), operation
Operation Humidity	10% ~ 95% relative humidity, non-condensing

I/O

MIO	1 x LPC interface 1 x SPI interface 2 x TX/RX UARTs 1 x I ² C interface
SATA	4 x SATA-600 Intel® Rapid Start Technology Intel® Smart Response Technology
Hardware Monitoring	Yes
Ethernet	1 port as 10/100/1000Mbps supports Wake-on-LAN and PXE Boot ROM with Intel® i218LM
Audio	HD link interface to baseboard for Codec
USB	2 x USB 3.0 6 x USB 2.0
TPM	ST for trusted platform
SMBus	Yes
Digital I/O	4 channels IN & 4 channels OUT

Features

- 5th/4th generation Intel® Core™ i7/i5/i3 & Celeron® processor (Broadwell/Haswell)
- Onboard 4 GB DDR3L chips (optional) and one SO-DIMM up to 8 GB
- Max. up to 4 lanes of PCIe
- 4 SATA-600 ports
- 6 USB 2.0 and 2 USB 3.0 ports
- TPM support
- LVDS and two DDI (Displayport/HDMI/DVI) with triple view supported



▲ Rear view

COM Express Interface Connector

Display

Chipset	Intel® HD Graphics Gen 8 Gfx APIs-DX11.1, OGL 4.2 3 independent displays
Display Interface	1 x LVDS; 18/24-bit single/dual channel 2 x DDI (DP, HDMI, DVI)

Packing List

Quick installation guide, user's manual/utility CD

Ordering Information

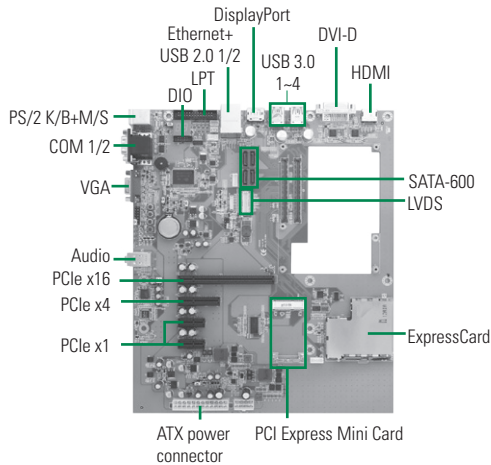
Standard

CEM881PG-i7-4650U (P/N: E38D881108)	COM Express type 6 module with Intel® Core™ i7-4650U 1.7 GHz, DP/LVDS, 10/100/1000Mbps Ethernet, USB 3.0 and TPM
CEM881PG-i5-4300U (P/N: E38D881109)	COM Express type 6 module with Intel® Core™ i5-4300U 1.9 GHz, DP/LVDS, 10/100/1000Mbps Ethernet, USB 3.0 and TPM
CEM881PG-i3-4010U (P/N: E38D881110)	COM Express type 6 module with Intel® Core™ i3-4010U 1.7 GHz, DP/LVDS, 10/100/1000Mbps Ethernet, USB 3.0 and TPM
CEM881PG-CEL-2980U (P/N: E38D881111)	COM Express type 6 module with Intel® Celeron® 2980U 1.6 GHz, DP/LVDS, 10/100/1000Mbps Ethernet, USB 3.0 and TPM
CEM881PG-i7-5650U (P/N: E38D881112)	COM Express type 6 module with Intel® Core™ i7-5650U 2.2 GHz, DP/LVDS, 10/100/1000Mbps Ethernet, USB 3.0 and TPM
CEM881PG-i5-5350U (P/N: E38D881113)	COM Express type 6 module with Intel® Core™ i5-5350U 1.8 GHz, DP/LVDS, 10/100/1000Mbps Ethernet, USB 3.0 and TPM
CEM881PG-i3-5010U (P/N: E38D881114)	COM Express type 6 module with Intel® Core™ i3-5010U 2.1 GHz, DP/LVDS, 10/100/1000Mbps Ethernet, USB 3.0 and TPM

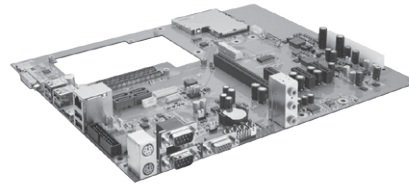
Optional

CEM94006 (P/N: E394006100)	ATX from factor type 6 evaluation board
5078D881000E	Low profile heatsink (L=95 mm, W=95 mm, H=20 mm)
5078D881100E	Heatspreader for CEM881 (L=95 mm, W=95 mm, H=11 mm)
5078D881210E	CEM881 BDW low profile heatsink w/fan (L=95 mm, W=95 mm, H=20 mm)
5078D881310E	CEM881 BDW heatspreader (L=95 mm, W=95 mm, H=11 mm)

CEB94006



- COM Express™ type 6 baseboard for evaluation purpose
- USB 3.0 supported
- Port 80 display for debugging
- Switch button for PWRBTN, RESET, SLEEP, LID



▲ Side view

System

CPU	COM Express™ type 6 module
System Memory	On the module
Chipset	SoC integrated
BIOS	On the module
SSD	N/A
Watchdog Timer	255 levels, 1~255 sec.
Expansion Interface	1 x PCIe x16 slot 1 x PCIe x4 slot 1 x PCI Express Mini Card 1 x ExpressCard slot 2 x PCIe x1 slot
Battery	Lithium 3V/220mAH
Power Requirements	TBD
Size	244 x 291 mm
Board Thickness	1.6 mm
Temperature	0°C ~ +60°C (32°F ~ 140°F), operation
Operation Humidity	10% ~ 95% relative humidity, non-condensing

I/O

MIO	1 x PS/2 Keyboard and mouse 1 x LPT 2 x RS-232
SATA	4 x SATA-600 connector
Hardware Monitoring	Detect CPU/system temperature, voltage and fan speed
Ethernet	1 x RJ-45 for 10/100/1000 Mbps
Audio	HD audio with Line-in/Line-out/MIC-in
USB	2 x USB 2.0, 4 x USB 3.0
SPI	Yes
SMBus	Yes
Digital I/O	8 Channels (4-IN & 4-OUT)
Port 80 Display	Dual 7 segments Port 80 display for convenient debugging purpose through LPC interface
Display	1 x LVDS; 18/24-bit single/dual channel 1 x VGA 1 x DisplayPort 1 x HDMI 1 x DVI-D

Packing List

Quick installation guide, user's manual/utility CD

Ordering Information

Standard	
CEB94006DGA	COM Express™ type 6 evaluation baseboard with PCI Express Mini Card, 1 GbE LAN, DisplayPort/HDMI and multiple I/O features

Compliant Modules

CEM860	COM Express type 6 compact module with 2th generation Intel® Core™ i7/i5/i3 and Celeron®, DP/LVDS/VGA, 10/100/1000Mbps Ethernet
CEM880	COM Express type 6 compact module with 5th/4th generation Intel® Core™ i7/i5/i3 and Celeron®, DP/LVDS/VGA, 10/100/1000Mbps Ethernet and USB 3.0
CEM881	COM Express type 6 compact module with 5th/4th generation Intel® Core™ i7/i5/i3 and Celeron®, DP/LVDS, 10/100/1000Mbps Ethernet and USB 3.0
CEM842/3	COM Express type 6 compact module with intel® E3845/J1900/N2807, DP/VGA/LVDS, 10/100/1000Mbps Ethernet

Архангельск (8182)63-90-72
Астана +7(7172)727-132
Белгород (4722)40-23-64
Брянск (4832)59-03-52
Владивосток (423)249-28-31
Волгоград (844)278-03-48
Вологда (8172)26-41-59
Воронеж (473)204-51-73
Екатеринбург (343)384-55-89
Иваново (4932)77-34-06
Ижевск (3412)26-03-58
Казань (843)206-01-48

Калининград (4012)72-03-81
Калуга (4842)92-23-67
Кемерово (3842)65-04-62
Киров (8332)68-02-04
Краснодар (861)203-40-90
Красноярск (391)204-63-61
Курск (4712)77-13-04
Липецк (4742)52-20-81
Магнитогорск (3519)55-03-13
Москва (495)268-04-70
Мурманск (8152)59-64-93
Набережные Челны (8552)20-53-41

Нижний Новгород (831)429-08-12
Новокузнецк (3843)20-46-81
Новосибирск (383)227-86-73
Орел (4862)44-53-42
Оренбург (3532)37-68-04
Пенза (8412)22-31-16
Пермь (342)205-81-47
Ростов-на-Дону (863)308-18-15
Рязань (4912)46-61-64
Самара (846)206-03-16
Санкт-Петербург (812)309-46-40
Саратов (845)249-38-78

Смоленск (4812)29-41-54
Сочи (862)225-72-31
Ставрополь (8652)20-65-13
Тверь (4822)63-31-35
Томск (3822)98-41-53
Тула (4872)74-02-29
Тюмень (3452)66-21-18
Ульяновск (8422)24-23-59
Уфа (347)229-48-12
Челябинск (351)202-03-61
Череповец (8202)49-02-64
Ярославль (4852)69-52-93