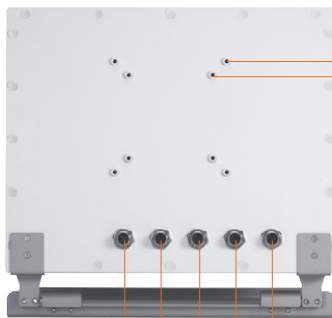


GOT812

12.1" XGA/SVGA TFT IP66-rated Fanless
Touch Panel Computer (-20°C ~ +55°C)

Features

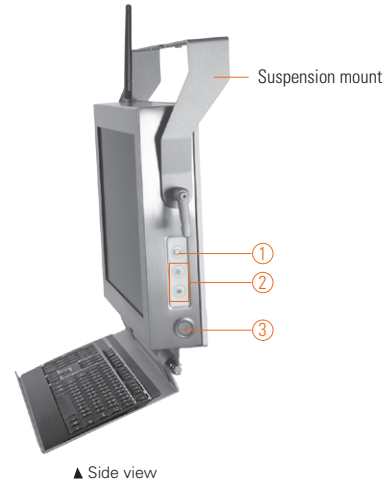
- 12.1" XGA/SVGA high brightness color TFT LCD
- Fanless system with Intel® Atom™ processor N270 1.6 GHz
- Water/dust-proof design (full enclosure: IP66)
- Wide operating temperature range of -20°C ~ +55°C
- Sunlight readable design: low-reflective T/S
- Supports suspension and VESA mount
- Orientated ISO76379V-36VDC vehicle power supply (GOT812LV only)
- All I/O are M12 connectors



VESA 100
VESA 75

1. Backlight switch
2. Brightness adjust
3. Power switch (ATX)
4. DC power connector
5. COM 1 (RS-232)
6. COM 2 (RS-232)
7. Ethernet
8. USB 2.0 x 2

④ ⑤ ⑥ ⑦ ⑧



▲ Side view

Introduction

The GOT812 is specially designed for heavy-duty & outdoor applications. Its IP66-rating stainless steel housing protects entire system from outside damage of water, powder and dust. It also outfits sunlight readable technology and wide operating temperature range of -20°C ~ +55°C. Thus, this robust unit is best suited for outdoor environments in extreme sunny or rainy day, dusty or wet spaces in food factories or kitchens and more harsh applications, such as steel factories, transformer stations and vessels.

IP66-sealed system

The GOT812 adopts a water/dust-proof housing design and five IP66-rated connectors. It passes entire system IP66 test by SGS and verified salt mist test and marine grade by IEC60945.

Sunlight readable design

Its sunlight readable technology with LED tech high brightness 1000 nits color display and low reflective touchscreen allows the screen legible even under strong sunlight.

Wide temp. (-20°C ~ +55°C) & anti-vibration (2G) design

The GOT812 supports wide temperature of -20°C ~ +55°C. Besides, the patent of anti-vibration for SSD ensures system reliability and stability.

Specifications

Front Bezel	Stainless type 316	
LCD Panel	Display Type	12.1" XGA TFT LCD (GOT812LR) 12.1" SVGA TFT LCD (GOT812L/GOT812LV)
	Brightness (cd/m ²)	1000 nits (GOT812LR) 450 nits (GOT812L/GOT812LV)
	Resolution	1024 x 768 (GOT812LR) 800 x 600 (GOT812L/GOT812LV)
	Viewing Angle (H/V)	160°/140° (GOT812LR) 100°/120° (GOT812L/GOT812LV)
Main System	CPU	Intel® Atom™ processor N270 1.6 GHz
	Chipset	Intel® 945GSE + ICH7M
	System Memory	1 x 200-pin DDR2 SO-DIMM max. up to 2 GB
	BIOS	AMI with Axiomtek standard features; such as, SmartView, Ethernet Boot ROM (RPL & PXE), customer CMOS backup
	Storage	1 x 2.5" SSD 1 x CompactFlash™
	Watchdog Timer	255 levels, 1~255 sec.
	Onboard Graphics	Integrated in Intel® 945GSE

Архангельск (8182)63-90-72

Астана +7(7172)727-132

Белгород (4722)40-23-64

Брянск (4832)59-03-52

Владивосток (423)249-28-31

Волгоград (844)278-03-48

Вологда (8172)26-41-59

Воронеж (473)204-51-73

Екатеринбург (343)384-55-89

Иваново (4932)77-34-06

Ижевск (3412)26-03-58

Казань (843)206-01-48

Калининград (4012)72-03-81

Калуга (4842)92-23-67

Кемерово (3842)65-04-62

Киров (8332)68-02-04

Краснодар (861)203-40-90

Красноярск (391)204-63-61

Курск (4712)77-13-04

Липецк (4742)52-20-81

Магнитогорск (3519)55-03-13

Москва (495)268-04-70

Мурманск (8152)59-64-93

Набережные Челны (8552)20-53-41

Нижний Новгород (831)429-08-12

Новокузнецк (3843)20-46-81

Новосибирск (383)227-86-73

Орел (4862)44-53-42

Оренбург (3532)37-68-04

Пенза (8412)22-31-16

Пермь (342)205-81-47

Ростов-на-Дону (863)308-18-15

Рязань (4912)46-61-64

Самара (846)206-03-16

Санкт-Петербург (812)309-46-40

Саратов (845)249-38-78

Смоленск (4812)29-41-54

Сочи (862)225-72-31

Ставрополь (8652)20-65-13

Тверь (4822)63-31-35

Томск (3822)98-41-53

Тула (4872)74-02-29

Тюмень (3452)66-21-18

Ульяновск (8422)24-23-59

Уфа (347)229-48-12

Челябинск (351)202-03-61

Череповец (8202)49-02-64

Ярославль (4852)69-52-93

Specifications

I/O Connector	1x RS-232/422/485 (COM 1 default RS-232) 1x RS-232 (COM 2) 2x USB 2.0 1x 10/100/1000Mbps Ethernet
Expansion Interface	1x PCIe Mini Card slot
Touchscreen	5-wire resistive low reflective type (GOT812LR) 5-wire resistive type (GOT812L/GOT812LV)
Power Supply	Power input 12VDC/24VDC; 9V-36V (GOT812LV)
Dimensions	304 mm (11.97") (W) x 58.5 mm (2.3") (D) x 248 mm (9.76") (H)
Packing Dimensions	380 mm (14.96") (W) x 190 mm (7.48") (D) x 430 mm (16.93") (H)
Weight (net/gross)	4.5 kg (9.92 lb)/6 kg (13.23 lb)
Environment	Operating temperature: -20°C ~ +55°C Storage Temperature: -30°C ~ +80°C (-22°F ~ +176°F) Relative humidity: 10% ~ 95% @ 40°C, non-condensing Operation vibration: 2G, 5 ~ 500Hz, random for 2.5" SSD 2G, 5 ~ 500Hz, random for CompactFlash™
Certification	CE/IEC60945/DNV 2.4 (compliant) (GOT812LR/GOT812L); CE/e13 (GOT-812LV)

* W.T.: Wide Temperature. All W.T. supported products have to be sorted by Axiomtek.

Optional Accessories

822B8120070E	GOT812 keyboard bracket (w/o keyboard)
822B8120080E	GOT812 suspension kit
594B8122100E	Water-proof COM port cable (1.8m)
594B8122820E	Water-proof USB cable (1.8m)
594B8122720E	Water-proof LAN cable (1.8m)
50964A23000E	72W/24V power adapter with M12 connector

Ordering Information

Vehicle type	
GOT812LV-DC (P/N-E22B812111)	12.1" IP66-rated heavy-duty vehicle touch panel computer with Intel® Atom™ N270
GOT812LV-RF-DC (P/N-E22B812112)	12.1" IP66-rated heavy-duty vehicle touch panel computer with Intel® Atom™ N270 and Wifi or 3G

Sunlight readable type	
GOT812LR-DC (P/N: E22B812102)	12.1" IP66-rated heavy-duty sunlight readable touch panel computer (1000 nits) with Intel® Atom™ N270
GOT812LR-RF-DC (P/N-E22B812112)	12.1" IP66-rated heavy-duty sunlight readable touch panel computer with Intel® Atom™ N270 and WiFi or 3G

Normal type	
GOT812L-DC (P/N: E22B812100)	12.1" IP66-rated heavy-duty touch panel computer with Intel® Atom™ N270
GOT812L-RF-DC (P/N-E22B812101)	12.1" IP66-rated heavy-duty touch panel computer with Intel® Atom™ N270 and WiFi or 3G

* Specification and certifications are based on options and may vary.

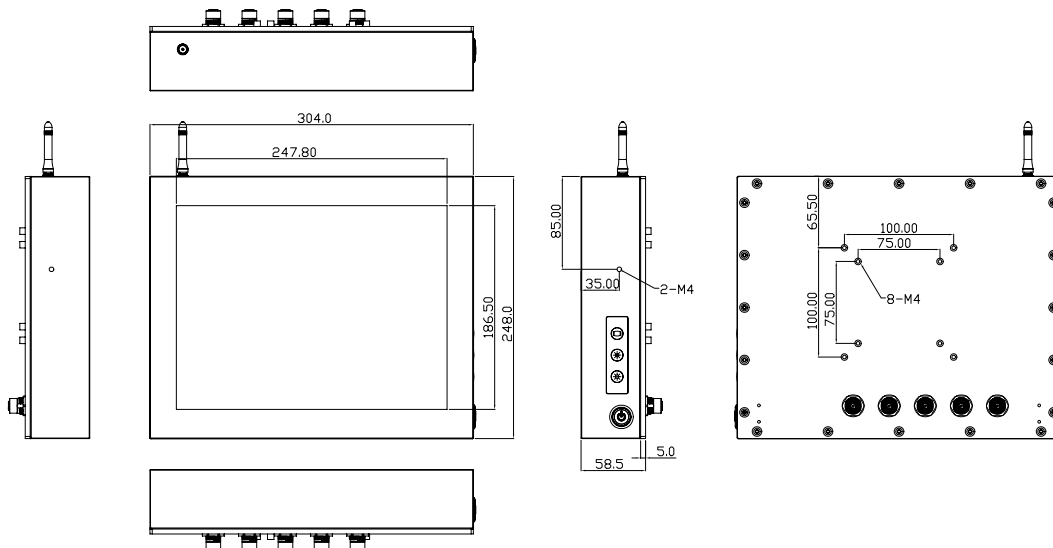
Optional EOS Installation

Window® XP Embedded
Window® CE.NET
Linux (GOT-812, GOT-812LR)

Optional OS Installation

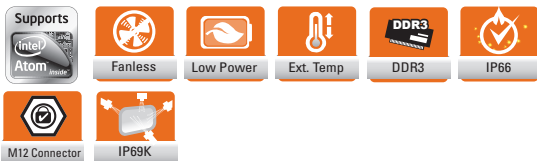
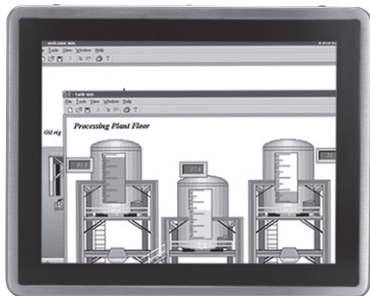
Windows® XP
Windows® 7

Dimensions



GOT812L(H)-880

12.1" XGA TFT IP66-rated Stainless Steel Fanless PCT (or Resistive Touch) Panel Computer with Intel® Core™ i5 Processor, Flat Bezel Design (-20°C ~ +50°C)



Introduction

The GOT812 is specially designed for food processing applications. Its IP66-rated stainless steel housing protects entire system from damage of water, powder and dust. It also supports a wide operating temperature range of -20°C to +50°C. Thus, this robust unit is best suited for extreme humidity, dusty or wet spaces in food factories or kitchens and more harsh applications.

Sunlight readable design

The GOT812H-880 features sunlight readable technology with LED tech high brightness 800 nits color display and low reflective touchscreen allows the screen legible even under strong sunlight.

Full IP66 and IP69K compliance

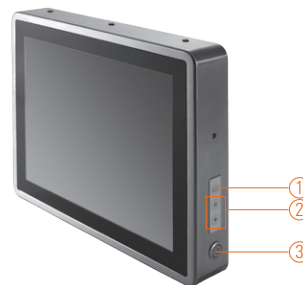
The GOT812 adopts a water/dust-proof housing design with five IP66-rated connectors, M12 I/O connectors and IP69K compliance that ensures the product's ability to resist ingress of high temperature and high pressure water. It passed entire system IP66 test by SGS, and verified salt mist test. Additionally, it was tested by a spray nozzle with high temperature water (80°C), a flow rate of 14–16 L/min and a nozzle hold with distance 10–15cm away from the device at angles of 0°, 30°, 60° and 90° for 30 seconds. The GOT812 is qualified to meet harsh environment applications.

Wide temp. (-20°C ~ +50°C) & anti-vibration (2G) design

The GOT812 featuring fanless and noiseless design supports a wide operating temperature range from -20°C to +50°C. Besides, the patent of anti-vibration for SSD ensures system reliability and stability.

Features

- 12.1" XGA TFT flat bezel LCD display
- Sunlight readable solution with 800 nits
- IP66/IP69K-rated (NEMA4X) water/dust/corrosion-proof design
- Full stainless steel enclosure with type 316
- Wide operating temperature range of -20°C ~ +50°C
- Fanless design with Intel® Core™ i5 processor
- Wireless network connectivity
- Wide range 9~36 VDC power input
- Supports suspension and VESA mount
- M12 type connectors for harsh environments



▲ Side view

1. Backlight switch
2. Brightness adjust
3. Power switch (ATX)

Specifications

Enclosure	Stainless type 316	
LCD Panel	Display Type	12.1" XGA TFT LCD
	Brightness (cd/m ²)	800 nits LCD (GOT812H-880) 420 nits LCD (GOT812L-880)
	Resolution	1024 x 768
	Viewing Angle (H/V)	160°/160°
Main System	CPU	Intel® Core™ i5 4300U 1.9 GHz (Haswell ULT)
	Chipset	SoC Integrated
	System Memory	1 x 204-pin DDR3L-1600 SO-DIMM max. up to 8 GB
	BIOS	AMI with Axiomtek standard features; such as, SmartView, Ethernet Boot ROM (RPL & PXE), customer CMOS backup
	Storage	1 x 2.5" SSD
	Watchdog Timer	255 levels, 1–255 sec.
	Onboard Graphics	Integrated in Intel® GFX

Specifications

I/O Connector	2 x RS-232/422/485 (default RS-232, A-Coded) 2 x USB 2.0 (A-Coded) 1 x USB 3.0 (A-Coded) 1 x 10/100/1000 Mbps Ethernet (X-Coded)
Expansion Interface	2 x PCI Express Mini Card slot
Touchscreen	5-wire resistive touch or projected capacitive multi-touch
Power Supply	Power input 9-36VDC
Dimensions	TBD
Packing Dimensions	TBD
Weight (net/gross)	TBD
Environment	Operating temperature: -20°C ~ +50°C (-4°F ~ +122°F) Storage Temperature: -30°C ~ +70°C (-22°F ~ +158°F) Relative humidity: 10% ~ 95% @ 40°C, non-condensing Operation vibration: 2G, 5 ~ 500Hz, random for 2.5" SSD
Certificate	CE

* W.T.: Wide Temperature. All W.T. supported products have to be sorted by Axiomtek.

Optional Accessories

594B8122100E	Water-proof COM port cable (1.8 m)
594B8152710E	Water-proof LAN cable (1.8 m)
50964A23000E	72W/24V power adapter with M12 connector

Ordering Information

GOT812L-880-C-DC	12.1" XGA fanless IP66-rated stainless steel touch panel computer with Intel® Core™ i5 4300U, projected capacitive touch screen, 9-36VDC power input, 420 nits LCD and Wi-Fi or 3G
GOT812L-880-C-RF-DC	12.1" XGA fanless IP66-rated stainless steel touch panel computer with Intel® Core™ i5 4300U, projected capacitive touch screen, 9-36VDC power input, 420 nits LCD and Wi-Fi or 3G
GOT812H-880-R-DC	12.1" XGA fanless IP66-rated stainless steel touch panel computer with Intel® Core™ i5 4300U, 5-wire flat resistive touch screen, 9-36VDC power input, 800 nits LCD and Wi-Fi or 3G
GOT812H-880-R-RF-DC	12.1" XGA fanless IP66-rated stainless steel touch panel computer with Intel® Core™ i5 4300U, 5-wire flat resistive touch screen, 9-36VDC power input, 800 nits LCD and Wi-Fi or 3G

* Specification and certifications are based on requirements and may vary.

Optional EOS Installation

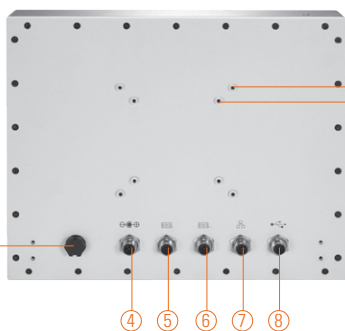
WES 7
WE8S

Optional OS Installation

Windows® 7
Windows® 8/8.1

GOT812LR-832

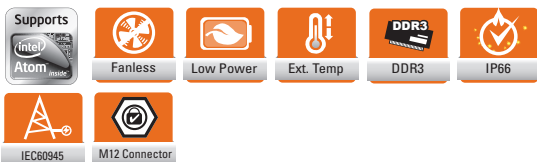
12.1" XGA TFT IP66-rated Stainless Steel Fanless Touch Panel Computer with Intel® Atom™ Processor N2600, Sunlight Readable and High Brightness LCD (-20°C ~ +55°C)



Waterproof, dust proof ventilation valve

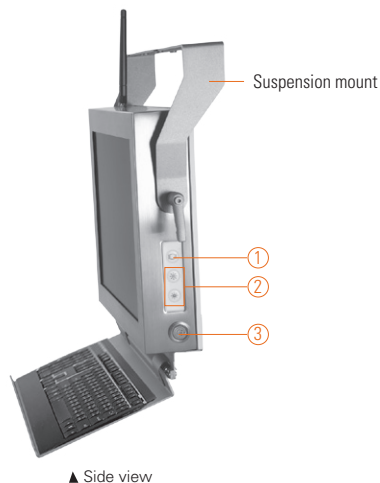
VESA 100
VESA 75

1. Backlight switch
2. Brightness adjust
3. Power switch (ATX)
4. DC power connector
5. COM 1 (RS-232/422/485)
6. COM 2 (RS-232)
7. Ethernet
8. USB 2.0 x 2



Features

- Sunlight readable 12.1" XGA TFT LCD with low-reflective color and high brightness (1000 nits)
- IP66-rated (NEMA4X) water/dust/corrosion-proof design
- Type 316 stainless steel front bezel
- Wide operating temperature range of -20°C ~ +55°C
- Fanless design with Intel® Atom™ processor N2600 1.6 GHz
- Wireless network connectivity
- M12 type I/O connections
- Designed and tested according to IEC60945 and DNV 2.4 standards
- Supports suspension and VESA mount



▲ Side view

Introduction

The GOT812LR-832 is specially designed for heavy-duty & outdoor applications. Its IP66-rated stainless steel housing protects against harsh environments where dust, dirt, moisture, water, oil, powder, or chemicals can contaminate or damage a system. It also outfits sunlight readable technology and wide operating temperature range of -20°C ~ +55°C. Thus, this robust unit is best suited for outdoor environments in extreme sunny or rainy day, dusty or wet spaces in food factories or kitchens and more harsh applications, such as steel factories, transformer stations and vessels.

IP66-sealed system

The 12.1-inch GOT812LR-832 adopts a water/dust-proof housing and five IP66-rated connectors. It passes entire system IP66 test by SGS and verified salt mist test.

Sunlight readable design

The GOT812LR-832 is equipped with a 12.1-inch XGA TFT LCD display with high brightness LED backlight (1000 nits). Its low reflective touch screen is ideal for outdoor use under direct sunlight.

Wide temp. (-20°C ~ +55°C) & anti-vibration (2G) design

The 12.1" industrial touch panel PC supports wide temperature of -20°C ~ +55°C. The panel system offers excellent vibration resistance of up to 2Grms (with SSD). It is ideal for outdoor applications or automation environments.

Specifications

Front Bezel	Stainless type 316	
LCD Panel	Display Type	12.1" XGA TFT LCD
	Brightness (cd/m ²)	1000 nits
	Resolution	1024 x 768
	Viewing Angle (H/V)	160°/140°
Main System	CPU	Intel® Atom™ processor N2600 1.6 GHz
	Chipset	Intel® NM10
	System Memory	1 x 204-pin DDR3 SO-DIMM max. up to 2 GB
	BIOS	AMI with Axiomtek standard features such as SmartView, Ethernet Boot ROM (RPL & PXE), customer CMOS backup
	Storage	1 x 2.5" SSD 1 x CompactFlash™
	Watchdog Timer	255 levels, 1-255 sec.
	Onboard Graphics	Integrated in Intel® GFX

Specifications

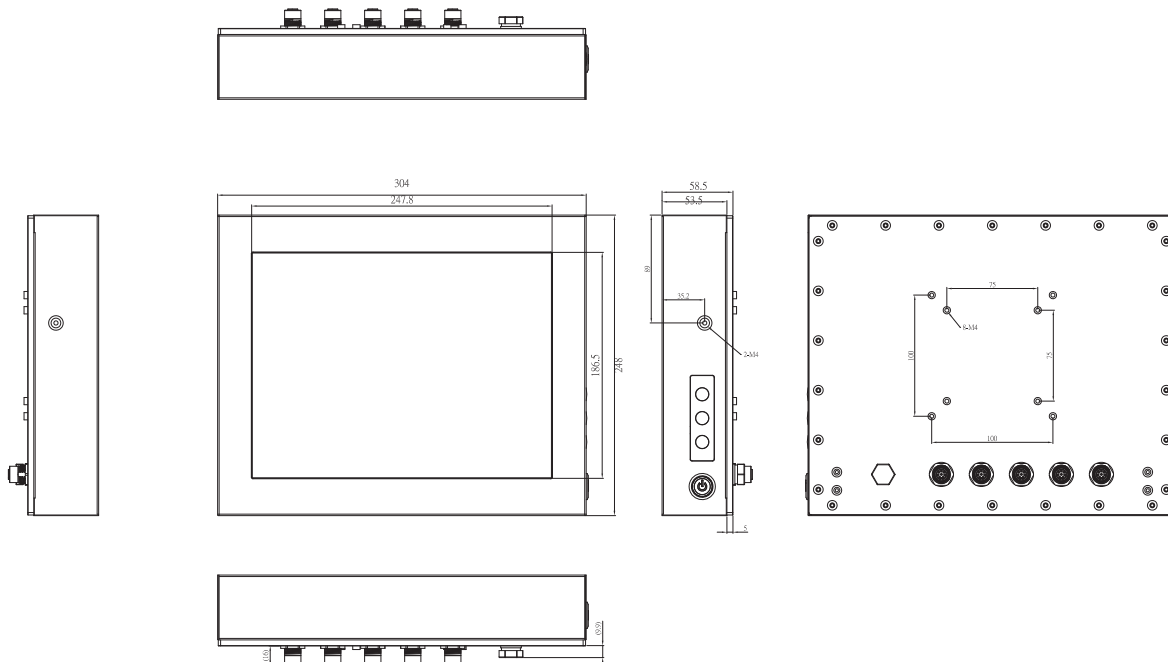
I/O Connector	1x RS-232/422/485 (COM 1 default RS-232) 1x RS-232 (COM 2) 2 x USB 2.0 1 x 10/100/1000 Mbps Ethernet
Expansion Interface	1 x PCI Express Mini Card slot
Touchscreen	5-wire resistive low reflective type
Power Supply	Power input 9-36VDC
Dimensions	304 mm (11.97") (W) x 58.5 mm (2.3") (D) x 248 mm (9.76") (H)
Packing Dimensions	380 mm (14.96") (W) x 190 mm (7.48") (D) x 430 mm (16.93") (H)
Weight (net/gross)	4.5 kg (9.92 lb)/6 kg (14.33 lb)
Environment	Operating temperature: -20°C ~ +55°C (-4°F ~ +131°F) Storage Temperature: -30°C ~ +80°C (-22°F ~ +176°F) Relative humidity: 10% ~ 95% @ 40°C, non-condensing Operation vibration: 2G, 5 ~ 500Hz, random for 2.5" SSD 2G, 5 ~ 500Hz, random for CompactFlash™
Certificate	CE

* W.T.: Wide Temperature. All W.T. supported products have to be sorted by Axiomtek.

Optional Accessories

822B8120070E	GOT812 keyboard bracket (w/o keyboard)
822B8120080E	GOT812 suspension kit
594B8122100E	Water-proof COM port cable (1.8m)
594B8122820E	Water-proof USB cable (1.8m)
594B8122720E	Water-proof LAN cable (1.8m)
50964A23000E	72W/24V power adapter with M12 connector

Dimensions



Ordering Information

Sunlight readable type	
GOT812LR-832-DC	12" XGA IP66-rated stainless steel fanless touch panel computer with Intel® Atom™ N2600, sunlight readable LCD (1000 nits), 5-wire resistive touch screen and 9-36VDC power input
GOT812LR-832-RF-DC	12" XGA IP66-rated stainless steel fanless touch panel computer with Intel® Atom™ N2600, sunlight readable LCD (1000 nits), 5-wire resistive touch screen, 9-36VDC power input and Wi-Fi or 3G

* Specification and certifications are based on requirements and may vary.

Optional EOS Installation

WES

WES 7

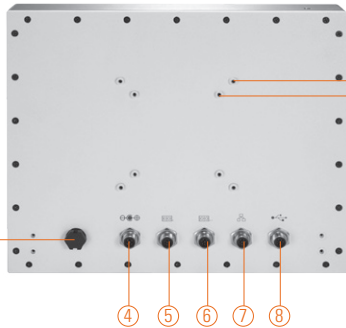
Optional OS Installation

Windows® XP

Windows® 7

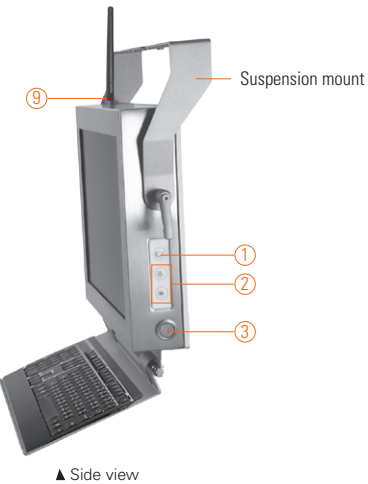
GOT812LR-834

12.1" TFT IP66-rated Stainless Steel Fanless Touch Panel Computer with Intel® Atom™ Processor E3827 and High Brightness (-20°C ~ +55°C)

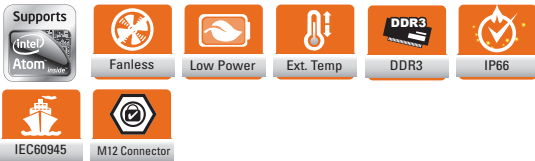


VESA 100
VESA 75

1. Backlight switch
2. Brightness adjust
3. Power switch (ATX)
4. DC power connector
5. COM 1 (RS-232/422/485)
6. COM 2 (RS-232/422/485)
7. Ethernet
8. USB 2.0 x 2
9. Wi-Fi/3G antenna x 3 (optional, only for RF version)



▲ Side view



Introduction

The GOT812LR-834 is specially designed for heavy-duty & outdoor applications. Its IP66-rated stainless steel housing protects entire system from outside damage of water, powder and dust. It also supports sunlight readable technology and wide operating temperature range of -20°C ~ +55°C. Thus, this robust unit is best suited for outdoor environments in extreme sunny or rainy day, dusty or wet spaces in food factories or kitchens and more harsh applications, such as steel factories, transformer stations and vessels.

IP66-sealed system

The 12.1" GOT812LR-834 adopts a water/dust-proof housing design and five IP66-rated connectors. It passes entire system IP66 test by SGS and verified salt mist test.

Sunlight readable design (optional)

Its sunlight readable technology with LED tech high brightness 1000 nits color display and low reflective touchscreen allows the screen legible even under strong sunlight for your options.

Wide temp. (-20°C ~ +55°C) & anti-vibration (2G) design

The 12.1" industrial touch panel PC supports wide temperature of -20°C ~ +55°C. Besides, the patent of anti-vibration for SSD ensures system reliability and stability.

Features

- Sunlight readable 12.1" high brightness (optional)
- Low-reflective color TFT LCD (optional)
- IP66 (NEMA4X) water/dust/corrosion-proof design
- Type 316 stainless steel front bezel
- Wide operating temperature range of -20°C ~ +55°C
- Fanless system with Intel® Atom™ processor E3827 1.75 GHz
- Wireless network connectivity
- Flexible and expandable M12 type I/O connections
- Designed and tested according to IEC60945
- Supports suspension and VESA mount

Specifications

Front Bezel	Stainless type 316	
LCD Panel	Display Type	12.1" XGA TFT LCD (GOT812LR) 12.1" SVGA TFT LCD (GOT812L)
	Brightness (cd/m ²)	1000 nits (GOT812LR) 500 nits (GOT812L)
	Resolution	1024 x 768 (GOT812LR) 800 x 600 (GOT812L)
	Viewing Angle (H/V)	160°/140° (GOT812LR/GOT812L)
	Main System	CPU
	Chipset	SoC Intergrated
	System Memory	2 x 204-pin DDR3L-1333 SO-DIMM dual channel max. up to 8 GB
	BIOS	AMI with Axiomtek standard features; such as, SmartView, Ethernet Boot ROM (RPL & PXE), customer CMOS backup
	Storage	1 x 2.5" SSD 1 x CFast™
	Watchdog Timer	255 levels, 1~255 sec.
	Onboard Graphics	Integrated in Intel® GFX

Specifications

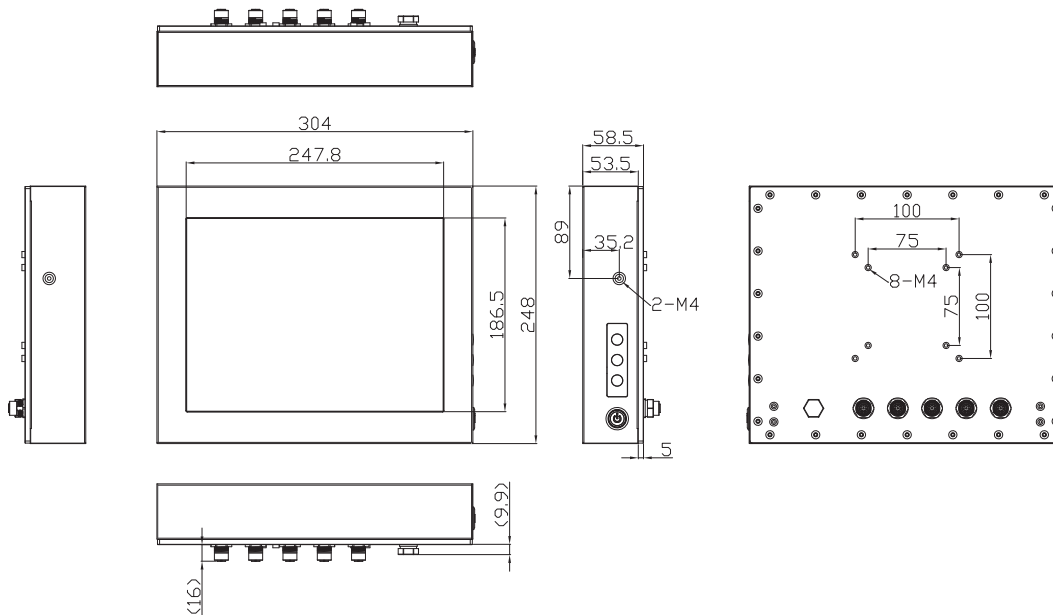
I/O Connector	2 x RS-232/422/485 (default RS-232) 2 x USB 2.0 1 x 10/100/1000 Mbps Ethernet
Expansion Interface	2 x PCI Express Mini Card slot
Touchscreen	5-wire resistive low reflective type
Power Supply	Power input 9-36VDC
Power Consumption	47W
Dimensions	304 mm (11.97") (W) x 58.5 mm (2.3") (D) x 248 mm (9.76") (H)
Packing Dimensions	380 mm (14.96") (W) x 190 mm (7.48") (D) x 430 mm (16.93") (H)
Weight (net/gross)	4.6 kg (10.14lb)/ 6.2kg (13.67lb)
Environment	Operating temperature: -20°C ~ +55°C (-4°F ~ +131°F) Storage Temperature: -30°C ~ +80°C (-22°F ~ +176°F) Relative humidity: 10% ~ 95% @ 40°C, non-condensing Operation vibration: 2G, 5 ~ 500Hz, random for 2.5" SSD 2G, 5 ~ 500Hz, random for CompactFlash™
Certificate	CE

* W.T.: Wide Temperature. All W.T. supported products have to be sorted by Axiomtek.

Optional Accessories

822B8120070E	GOT812 keyboard bracket (w/o keyboard)
822B8120080E	GOT812 suspension kit
594B8122100E	Water-proof COM port cable (1.8m)
594B8122820E	Water-proof USB cable (1.8m)
594B8122720E	Water-proof LAN cable (1.8m)
50964A23000E	72W/24V power adapter with M12 connector

Dimensions



Ordering Information

GOT812LR-834-DC	12.1" XGA fanless IP66-rated stainless steel touch panel computer with Intel® Atom™ E3827, sunlight readable LCD (1000 nits), 5-wire resistive touch screen and 9-36VDC power input
GOT812LR-834-RF-DC	12.1" XGA fanless IP66-rated stainless steel touch panel computer with Intel® Atom™ E3827, sunlight readable LCD (1000 nits), 5-wire resistive touch screen, 9-36VDC power input and Wi-Fi or 3G
GOT812L-834-DC	12.1" XGA fanless IP66-rated stainless steel touch panel computer with Intel® Atom™ E3827, general purpose LCD (500 nits), 5-wire resistive touch screen and 9-36VDC power input
GOT812L-834-RF-DC	12.1" XGA fanless IP66-rated stainless steel touch panel computer with Intel® Atom™ E3827, general purpose LCD (500 nits), 5-wire resistive touch screen, 9-36VDC power input and Wi-Fi or 3G

* Specification and certifications are based on requirements and may vary.

Optional EOS Installation

WES 7

WE8S

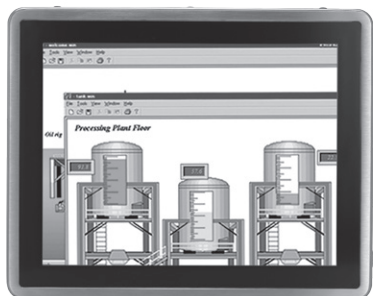
Optional OS Installation

Windows® 7

Windows® 8/8.1

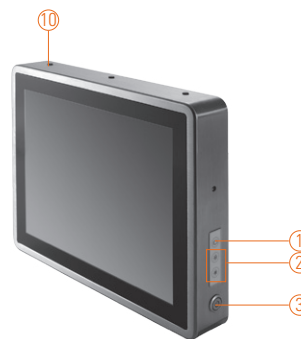
GOT815-834

15" XGA TFT IP66-rated Stainless Steel Fanless PCT (or Resistive Touch) Panel Computer with Intel® Atom™ Processor E3827 and Flat Bezel Design (-20°C ~ +55°C)

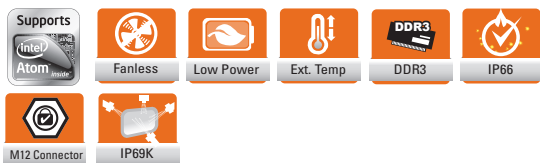


waterproof, dust proof ventilation valve

1. Backlight switch
2. Brightness adjust
3. Power switch (ATX)
4. DC power connector (A-coded)
5. COM 1 (RS-232/422/485) (A-coded)
6. COM 2 (RS-232/422/485) (A-coded)
7. Ethernet (X-coded)
8. USB 2.0 x 2 (A-coded)
9. USB 2.0 x 2 (A-coded)
10. Wi-Fi/3G antenna x 3 (optional, only for RF version)



▲ Side view



Introduction

The 15-inch GOT815 is specially designed for food processing applications. Its IP66-rating stainless steel housing protects entire system from damage of water, powder and dust. It also supports a wide operating temperature range of -20°C ~ +55°C. Thus, this robust unit is best suited for extreme humidity, dusty or wet spaces in food factories or kitchens and more harsh applications.

Full IP66 and IP69K compliance

The GOT815 adopts a water/dust-proof housing design with five IP66-rated connectors, M12 I/O connectors and IP69K compliance that ensures the product's ability to resist ingress of high temperature and high pressure water. It passed entire system IP66 test by SGS, and verified salt mist test. Additionally, it was tested by a spray nozzle with high temperature water (80°C), a flow rate of 14–16 L/min and a nozzle hold with distance 10–15cm away from the device at angles of 0°, 30°, 60° and 90° for 30 seconds. The GOT815 is qualified to meet harsh environment applications.

Wide temp. (-20°C ~ +55°C) & anti-vibration (2G) design

The GOT815 featuring fanless and noiseless design supports a wide operating temperature range from -20°C to +55°C. Besides, the patent of anti-vibration for SSD ensures system reliability and stability.

Features

- 15" XGA TFT LCD flat bezel-projected capacitive (or resistive) touch
- IP66/IP69K-rated (NEMA4X) water/dust/corrosion-proof design
- Full stainless steel enclosure with type 316
- Wide operating temperature range of -20°C ~ +55°C
- Fanless system with Intel® Atom™ processor E3827 1.75 GHz
- Wireless network connectivity
- Wide range 9~36 VDC power input
- Supports suspension and VESA mount
- M12 type I/O connectors for harsh environments

Specifications

Enclosure	Stainless type 316	
LCD Panel	Display Type	15" XGA TFT LCD
	Brightness (cd/m ²)	420 nits
	Resolution	1024 x 768
	Viewing Angle (H/V)	160°/160°
Main System	CPU	Intel® Atom™ processor E3827 1.75 GHz (Bay Trail)
	Chipset	SoC Integrated
System Memory	2 x 204-pin DDR3L-1333 SO-DIMM dual channel max. up to 8 GB	
BIOS	AMI with Axiomtek standard features; such as, SmartView, Ethernet Boot ROM (RPL & PXE), customer CMOS backup	
Storage	1 x 2.5" SSD	
	1 x CFast™	
Watchdog Timer	255 levels, 1~255 sec.	
Onboard Graphics	Integrated in Intel® GFX	

Specifications

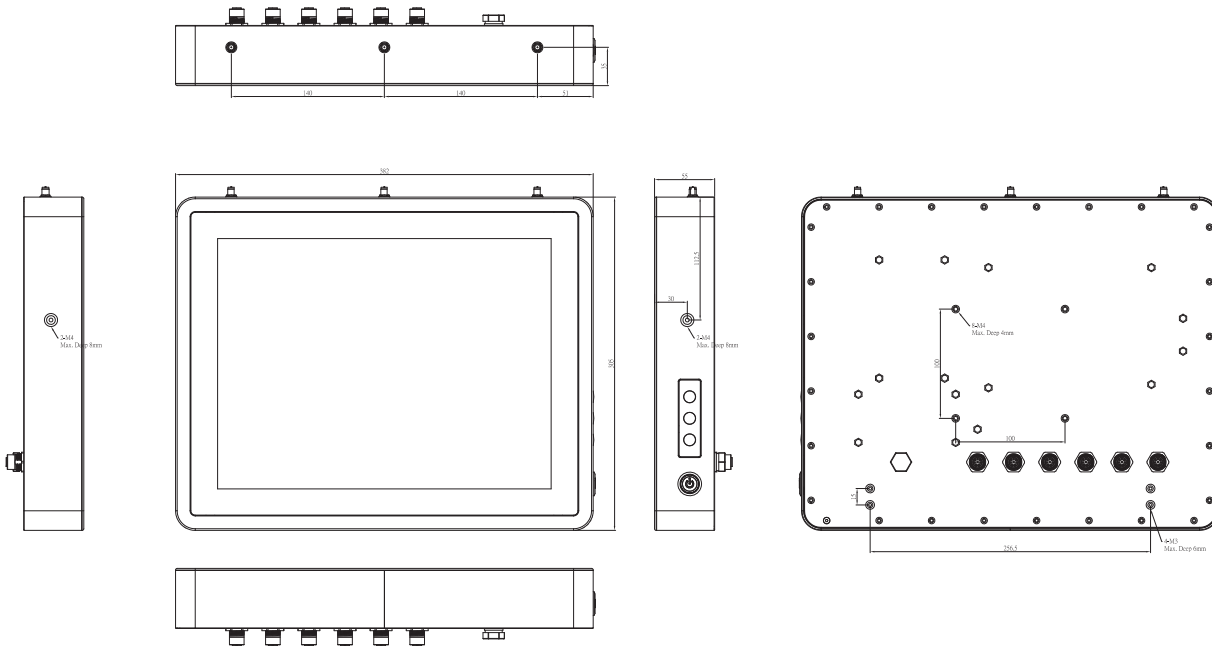
I/O Connector	2 x RS-232/422/485 (default RS-232, A-Coded) 4 x USB 2.0 (A-Coded) 1 x 10/100/1000 Mbps Ethernet (X-Coded)
Expansion Interface	2 x PCI Express Mini Card slot
Touchscreen	5-wire resistive touch or projected capacitive multi-touch
Power Supply	Power input 9-36VDC
Power Consumption	30W
Dimensions	382 mm (15.4") (W) x 55 mm (2.17") (D) x 305 mm (12.01") (H)
Packing Dimensions	510 mm (20.07") (W) x 186 mm (7.32") (D) x 532 mm (20.94") (H)
Weight (net/gross)	5.2kg (11.46lb)/ 8.4kg (18.51lb)
Environment	Operating temperature: -20°C ~ +55°C (-4°F ~ +131°F) Storage Temperature: -30°C ~ +70°C (-22°F ~ +158°F) Relative humidity: 10% ~ 95% @ 40°C, non-condensing Operation vibration: 2G, 5 ~ 500Hz, random for 2.5" SSD 2G, 5 ~ 500Hz, random for CompactFlash™
Certificate	CE

* W.T.: Wide Temperature. All W.T. supported products have to be sorted by Axiomtek.

Optional Accessories

594B8122100E	Water-proof COM port cable (1.8 m)
594B8122820E	Water-proof USB cable (1.8 m)
594B8152710E	Water-proof LAN cable (1.8 m)
50964A23000E	72W/24V power adapter with M12 connector

Dimensions



Ordering Information

Sunlight readable type	
GOT815-834-C-DC	15" XGA fanless IP66-rated stainless steel touch panel computer with Intel® Atom™ E3827, projected capacitive touch screen, 9-36VDC power input and flat bezel design
GOT815-834-C-RF-DC	15" XGA fanless IP66-rated stainless steel touch panel computer with Intel® Atom™ E3827, projected capacitive touch screen, 9-36VDC power input and flat bezel design and Wi-Fi or 3G
GOT815-834-R-DC	15" XGA fanless IP66-rated stainless steel touch panel computer with Intel® Atom™ E3827, 5-wire flat resistive touch screen, 9-36VDC power input and flat bezel design
GOT815-834-R-RF-DC	15" XGA fanless IP66-rated stainless steel touch panel computer with Intel® Atom™ E3827, 5-wire flat resistive touch screen, 9-36VDC power input, flat-bezel design and Wi-Fi or 3G

* Specification and certifications are based on requirements and may vary.

Optional EOS Installation

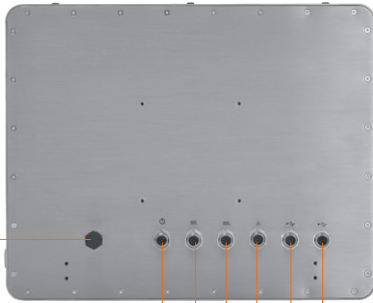
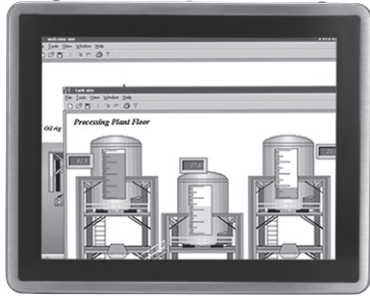
WES 7
WEBS

Optional OS Installation

Windows® 7
Windows® 8/8.1

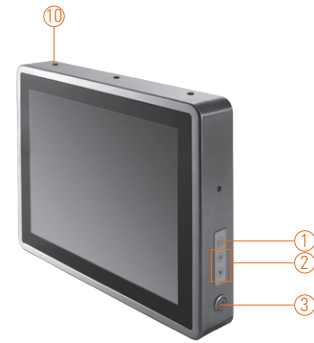
GOT817-834

17" SXGA TFT IP66-rated Stainless Steel Fanless PCT (or Resistive Touch) Panel Computer with Intel® Atom™ Processor E3827 and Flat Bezel Design (-20°C ~ +55°C)

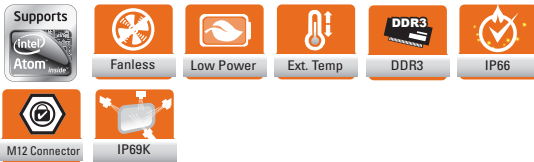


waterproof, dustproof ventilation valve

1. Backlight switch
2. Brightness adjust
3. Power switch (ATX)
4. DC power connector (A-coded M12)
5. COM 1 (RS-232/422/485) (A-coded M12)
6. COM 2 (RS-232/422/485) (A-coded M12)
7. Ethernet (X-coded)
8. USB 2.0 x 2 (A-coded M12)
9. USB 2.0 x 2 (A-coded M12)
10. Wi-Fi/3G antenna x 3 (optional, only for RF version)



▲ Side view



Introduction

The 17-inch GOT817-834 is specially designed for food processing applications. Its IP66-rated stainless steel housing protects entire system from damage of water, powder and dust. It also outfits wide operating temperature range of -20°C ~ +55°C. Thus, this robust unit is best suited for extreme humidity, dusty or wet spaces in food factories or kitchens and more harsh applications.

Full IP66 and IP69K compliance

The GOT8175 adopts a water/dust-proof housing design with five IP66-rated connectors, M12 I/O connectors and IP69K compliance that ensures the product's ability to resist ingress of high temperature and high pressure water. It passed entire system IP66 test by SGS, and verified salt mist test. Additionally, it was tested by a spray nozzle with high temperature water (80°C), a flow rate of 14–16 L/min and a nozzle hold with distance 10–15cm away from the device at angles of 0°, 30°, 60° and 90° for 30 seconds. The outstanding GOT817 stainless touch panel PC is qualified to meet harsh environment applications.

Wide temp. (-20°C ~ +55°C) & anti-vibration (2G) design

The rugged 17" industrial stainless touch panel PC GOT817-834 featuring fanless and noiseless design supports a wide operating temperature range from -20°C to +55°C. Besides, the patent of anti-vibration for SSD ensures system reliability and stability.

Features

- 17" SXGA TFT LCD flat bezel-projected capacitive (or resistive) touch
- IP66/IP69K-rated (NEMA4X) water/dust/corrosion-proof design
- Full stainless steel enclosure with type 316
- Wide operating temperature range of -20°C ~ +55°C
- Fanless system with Intel® Atom™ processor E3827 1.75 GHz
- Wireless network connectivity
- Wide range 12~36VDC
- Supports suspension and VESA mount
- M12 type I/O connectors for harsh environments

Specifications

Enclosure	Stainless type 316	
LCD Panel	Display Type	17" SXGA TFT LCD
	Brightness (cd/m ²)	350 nits
	Resolution	1280 x 1024
	Viewing Angle (H/V)	170°/160°
Main System	CPU	Intel® Atom™ processor E3827 1.75 GHz (Bay Trail)
	Chipset	SoC Integrated
	System Memory	2 x 204-pin DDR3L-1333 SO-DIMM dual channel max. up to 8 GB
	BIOS	AMI with Axiomtek standard features; such as, SmartView, Ethernet Boot ROM (RPL & PXE), customer CMOS backup
	Storage	1 x 2.5" SSD 1 x CFast™
	Watchdog Timer	255 levels, 1~255 sec.
	Onboard Graphics	Integrated in Intel® GFX

Specifications

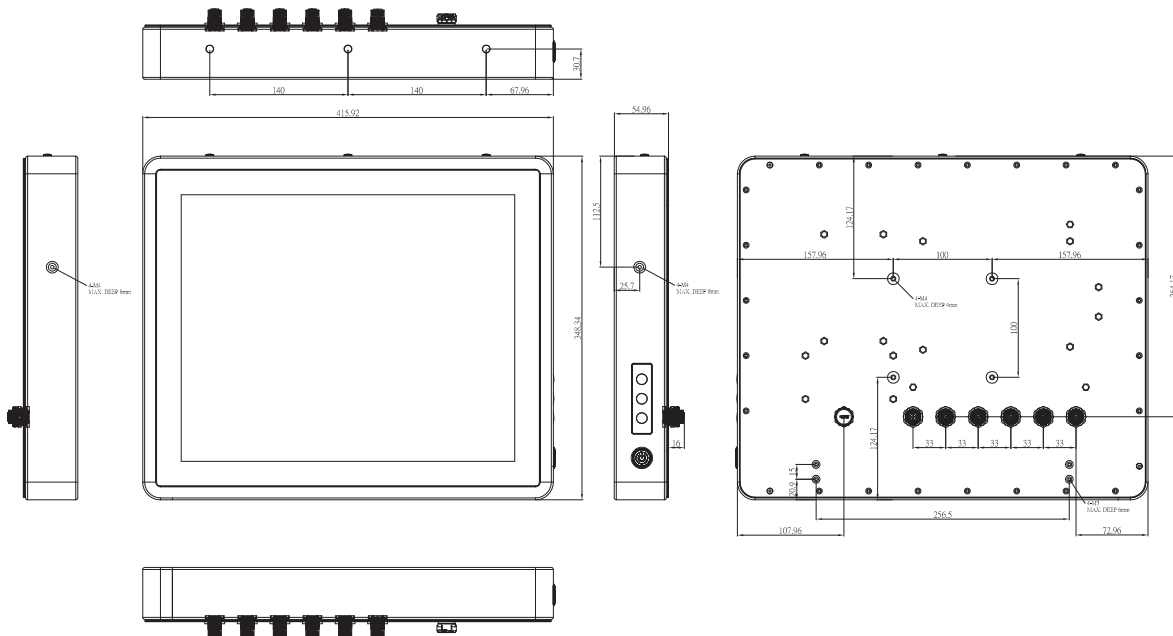
I/O Connector	2 x RS-232/422/485 (default RS-232, A-Coded) 4 x USB 2.0 (A-Coded) 1 x 10/100/1000Mbps Ethernet (X-Coded)
Expansion Interface	2 x PCI Express Mini Card slot
Touchscreen	5-wire resistive touch or projected capacitive multi-touch
Power Supply	Power input 12-36VDC
Power Consumption	50W
Dimensions	415.92 mm (16.37") (W) x 54.96 mm (2.16") (D) x 348.34 mm (13.71") (H)
Packing Dimensions	250 mm (9.84") (W) x 585 mm (23.03") (D) x 615 mm (24.21") (H)
Weight (net/gross)	7.04 kg (15.52 lb)/10.3 kg (22.71 lb)
Environment	Operating temperature: -20°C ~ +55°C (-4°F ~ +131°F) Storage Temperature: -30°C ~ +70°C (-22°F ~ +158°F) Relative humidity: 10% ~ 95% @ 40°C, non-condensing Operation vibration: 2G, 5 ~ 500Hz, random for 2.5" SSD 2G, 5 ~ 500Hz, random for CFast™
Certificate	CE

* W.T.: Wide Temperature. All W.T. supported products have to be sorted by Axiomtek.

Optional Accessories

594B8122100E	Water-proof COM port cable (1.8 m)
594B8122820E	Water-proof USB cable (1.8 m)
594B8152710E	Water-proof LAN cable (1.8 m)
50964A23000E	72W/24V power adapter with M12 connector

Dimensions



Архангельск (8182)63-90-72
Астана +7(7172)727-132
Белгород (4722)40-23-64
Брянск (4832)59-03-52
Владивосток (423)249-28-31
Волгоград (844)278-03-48
Вологда (8172)26-41-59
Воронеж (473)204-51-73
Екатеринбург (343)384-55-89
Иваново (4932)77-34-06
Ижевск (3412)26-03-58
Казань (843)206-01-48

Калининград (4012)72-03-81
Калуга (4842)92-23-67
Кемерово (3842)65-04-62
Киров (8332)68-02-04
Краснодар (861)203-40-90
Красноярск (391)204-63-61
Курск (4712)77-13-04
Липецк (4742)52-20-81
Магнитогорск (3519)55-03-13
Москва (495)268-04-70
Мурманск (8152)59-64-93
Набережные Челны (8552)20-53-41

Ordering Information

Sunlight readable type

GOT817-834-C-DC	17" SXGA fanless IP66-rated stainless steel touch panel computer with Intel® Atom™ E3827, projected capacitive touch screen, 12-36VDC power input and flat-bezel design
GOT817-834-C-RF-DC	17" SXGA fanless IP66-rated stainless steel touch panel computer with Intel® Atom™ E3827, projected capacitive touch screen, 12-36VDC power input, flat-bezel design and Wi-Fi or 3G
GOT817-834-R-DC	17" SXGA fanless IP66-rated stainless steel touch panel computer with Intel® Atom™ E3827, 5-wire flat resistive touch screen, 12-36VDC power input and flat-bezel design
GOT817-834-R-RF-DC	17" SXGA fanless IP66-rated stainless steel touch panel computer with Intel® Atom™ E3827, 5-wire flat resistive touch screen, 12-36VDC power input, flat-bezel design and Wi-Fi or 3G

* Specification and certifications are based on options and may vary.

Optional EOS Installation

WES 7

WES8

Optional OS Installation

Windows® 7

Windows® 8/8.1