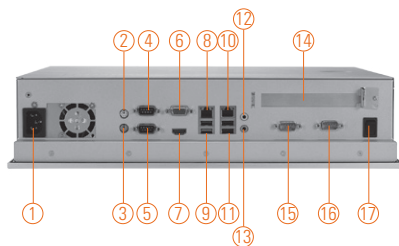
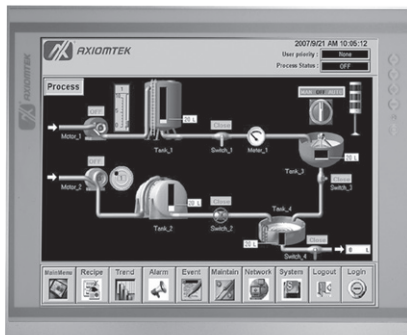


# P1177E-842

17" SXGA TFT Expandable Industrial Touch Panel Computer with Intel® Celeron® Processor J1900 and 1 PCI Slot



- |                               |                                    |                                 |
|-------------------------------|------------------------------------|---------------------------------|
| 1. 1 x AC Plug                | 7. 1 x HDMI                        | 13. 1 x Mic-in                  |
| 2. PS/2 Mouse                 | 8. 1 x RJ-45 for Gigabit Ethernet  | 14. 1 x PCI Card expansion slot |
| 3. PS/2 Keyboard              | 9. 1 x USB 3.0, 1 x USB 2.0        | 15. 1 x RS-232 (COM 3)          |
| 4. 1 x RS-232/422/485 (COM 1) | 10. 1 x RJ-45 for Gigabit Ethernet | 16. 1 x RS-232 (COM 4)          |
| 5. 1 x RS-232/422/485 (COM 2) | 11. 2 x USB 2.0                    | 17. 1 x Switch for power on/off |
| 6. 1 x VGA                    | 12. 1 x Line-out                   |                                 |

## Features

- 17" SXGA TFT LCD display
- Intel® Celeron® quad-core processor J1900 2.0 GHz (Bay Trail)
- One PCI Card expansion and one PCI Express Mini Card with SIM slot
- 1 USB 3.0, 3 USB 2.0 and 4 COM ports
- Built-in speakers and optional Wi-Fi 802.11 b/g/n module
- Robust aluminum with IP65 compliant front bezel design



▲ Easy Maintenance & Hardware Installation



## Introduction

The P1177E-842 is equipped with a 17-inch SXGA TFT LCD display and IP65 compliant front bezel. This rugged panel PC is powered by quad-core Intel® Celeron® processor J1900 for a great balance between performance and power consumption. The entire system is protected by a robust, slim aluminum casing with IP65/NEMA 4 compliant front bezel, which makes it suitable to operate in extreme and space-constricting environments. There are only three screws on the back chassis, which users can quickly remove it and install storage, memory and expansion cards with ease. It comes with both PCI and PCI Express Mini Card slots, and is also capable of dual-display through VGA and HDMI outputs. The P1177E-842 is a highly integrated system for factory automation, kiosks, industrial automation, and IoT & M2M applications.

### Dual Monitor Display

The Axiomtek P1177E-842 comes with dual display interfaces of VGA and HDMI to enable multiple displays on a single panel computer system. It not only increases larger screen viewing but also improves the productivity.

## Specifications

Front Bezel	Aluminum with IP65/NEMA 4 rugged protection	
LCD Panel	Display Type	17" SXGA TFT LCD
	Brightness	250 nits
	Resolution	1280 x 1024 pixels
	Viewing Angle	170°/160°
Main System	CPU	Intel® Celeron® processor J1900 2.0 GHz (Bay Trail)
	System Memory	1 x 204-pin DDR3L-1333 SO-DIMM max. up to 8 GB
	BIOS	AMI UEFI BIOS with OA 3.0 built
	Storage	1 x 3.5" or 2.5" SATA HDD
		1 x mSATA
	Watchdog Timer	255 levels, 1~255 sec.

Архангельск (8182)63-90-72

Астана +7(7172)727-132

Белгород (4722)40-23-64

Брянск (4832)59-03-52

Владивосток (423)249-28-31

Волгоград (844)278-03-48

Вологда (8172)26-41-59

Воронеж (473)204-51-73

Екатеринбург (343)384-55-89

Иваново (4932)77-34-06

Ижевск (3412)26-03-58

Казань (843)206-01-48

Калининград (4012)72-03-81

Калуга (4842)92-23-67

Кемерово (3842)65-04-62

Киров (8332)68-02-04

Краснодар (861)203-40-90

Красноярск (391)204-63-61

Курск (4712)77-13-04

Липецк (4742)52-20-81

Магнитогорск (3519)55-03-13

Москва (495)268-04-70

Мурманск (8152)59-64-93

Набережные Челны (8552)20-53-41

Нижний Новгород (831)429-08-12

Новокузнецк (3843)20-46-81

Новосибирск (383)227-86-73

Орел (4862)44-53-42

Оренбург (3532)37-68-04

Пенза (8412)22-31-16

Пермь (342)205-81-47

Ростов-на-Дону (863)308-18-15

Рязань (4912)46-61-64

Самара (846)206-03-16

Санкт-Петербург (812)309-46-40

Саратов (845)249-38-78

Смоленск (4812)29-41-54

Сочи (862)225-72-31

Ставрополь (8652)20-65-13

Тверь (4822)63-31-35

Томск (3822)98-41-53

Тула (4872)74-02-29

Тюмень (3452)66-21-18

Ульяновск (8422)24-23-59

Уфа (347)229-48-12

Челябинск (351)202-03-61

Череповец (8202)49-02-64

Ярославль (4852)69-52-93

## Specifications

IO Connector	2 x RS-232/422/485 1 x RS-232 1 x RS-232 with 5V & 12V 2 x 10/100/1000 Mbps Ethernet 1 x VGA 1 x HDMI 1 x PS2 KB & 1 x PS2 MS 1 x USB 3.0, 3 x USB 2.0 1 x Audio (Mic-in/Line-out)
Expansion Interface	1 x PCI Slot 1 x PCI Express Mini Card with SIM Slot
Touchscreen	5-wire resistive type Light transmission 79% 1 million activations (typical) at a single point
Power Supply	100-240 VAC, 200W
Dimensions	410 mm (16.14") (W) x 92 mm (3.62") (D) x 338 mm (13.30") (H)
Packing Dimension	605 mm (23.82") (W) x 240 mm (9.45") (D) x 570 mm (22.44") (H)
Weight(net/gross)	6.3 kg (13.89 lb) / 10.1 kg (22.27 lb)
Environment	Operating Temperature: 0°C ~ +45°C (+32°F ~ +113°F) Storage Temperature: -20°C ~ +65°C (-4°F ~ +149°F) Relative humidity: 10 ~ 90%@40°C, non-considering Operating vibration: 1.0 G, 5-500Hz, random
Certificate	CE

## Ordering Information

P1177E-842	17" SXGA expandable industrial touch panel computer with Intel® Celeron® J1900 2.0 GHz (up to 2.42 GHz) quad core processor, resistive touch screen, 1 PCI slot and 100-240VAC
------------	--

\* Specification and certifications are based on requirements and may vary.

## Optional Accessories

82211770060E	VESA & WALL mount kit
82211770070E	Rack mount kit
E202003330	VM-101 (VESA ARM clamp type)
E202003329	VM-105 (VESA ARM wall-mount)
82231570160E	Wireless LAN Kit

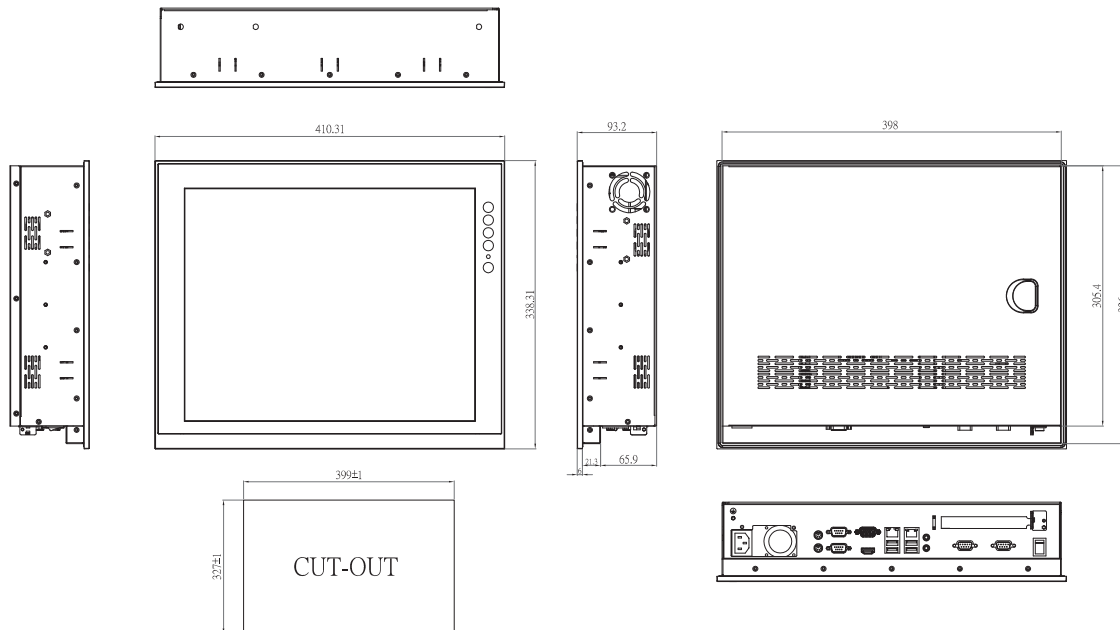
## Optional OS Installation

Windows® 7/8.1
Windows® Embedded 7/8



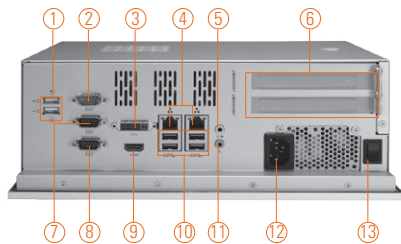
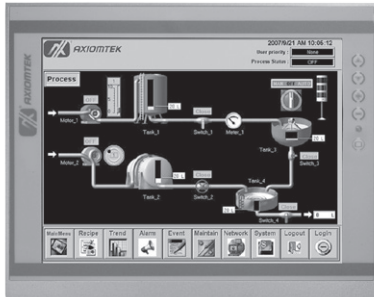
▲ Less screw design

## Dimensions



# P1127E-871

12.1" XGA TFT Intel® Core™ i7/i5/i3, Celeron® & Pentium® Expandable Industrial Touch Panel Computer with 2 PCIe or 2 PCI Slots



- |   |                             |
|---|-----------------------------|
| 1. USB 2.0 x 2                          | 8. COM 2 (RS-232)           |
| 2. COM 3 with 5V & 12V (RS-232)         | 9. HDMI                     |
| 3. DVI-I                                | 10. USB 3.0 x 4             |
| 4. Ethernet x 2                         | 11. Audio (MIC-in)          |
| 5. Audio (Line-out)                     | 12. AC plug                 |
| 6. PCIe x8 x 2 or PCI x 2               | 13. Switch for power on/off |
| 7. COM 1 with 5V & 12V (RS-232/422/485) |                             |



## Introduction

The P1127E-871 is a multimedia 12.1" touch panel PC for kiosk application. It has a fashionable mechanism design and industrial-grade material front bezel which can avoid damage from chemical corrosion. To meet the demands of multimedia application, the P1127E-871 is powered by a high performance 3rd & 2nd generation Intel® Core™ i7/i5/i3, Celeron®, Pentium® & Xeon® processors with the Intel® C216 chipset. It features three COM ports, two Gigabit Ethernet and up to 16GB memory of dual-channel DDR3 that delivers high computing capability for high performance-demanding applications. The industrial panel PC is most suitable for kiosk, factory and automation.

### Dual Monitor Display

The P1127E-871 supports DVI or HDMI simultaneously that features the use of dual display devices for increasing the area available for programs running on a single computer system. It not only increases larger screen viewing but also improves the productivity.

### Expandable for 2 PCIe or 2 PCI

The P1127E-871 has 2 PCIe x8 or 2 PCI slots for expansion purpose. User can easily plug in standard half-size PCI or PCIe card for any requirement.

### Speaker and WLAN Antenna Supported

The P1127E-871 features built-in speakers for kiosk application to display multimedia content program. It also supports WLAN module antenna (optional) for wireless network connectivity.

### Friendly Less Screw Design

Removing the back cover to maintain the system in unscrewing 3 screws only that saving your time and increasing our work efficiency many times.

## Features

- 12.1" XGA TFT LCD display
- LGA1155 socket 3rd & 2nd generation Intel® Core™ i7/i5/i3, Celeron®, Pentium® & Xeon® processor
- Intel® C216 chipset
- Easy installation: Less screw design for user's convenience
- 4 USB 3.0, 2 USB 2.0 and 3 COM ports
- Flexible expansion interface (two PCIe or two PCI slots)
- Built-in speakers and optional Wi-Fi 802.11 b/g/n module
- Robust aluminum with IP65 compliant front bezel design



▲ Side view

## Specifications

Front Bezel	Aluminum w/ IP65/NEMA 4 rugged protection	
LCD Panel	Display Type	12.1" XGA TFT LCD
	Brightness	500 nits
	Resolution	1024 x 768 pixels
	Viewing Angle	160°/140°
Main System	CPU	LGA1155 socket 3rd & 2nd generation Intel® Core™ i7/i5/i3, Celeron®, Pentium® & Xeon® processor
	Chipset	Intel® C216
	System Memory	2 x 204-pin DDR3 SO-DIMM max. up to 16 GB
	BIOS	AMI UEFI BIOS with OA 3.0 built
	Storage	1 x 2.5" SATA HDD
	Watchdog Timer	255 levels, 1~255 sec.

## Specifications

IO Connector	1 x RS-232 (COM 2) 1 x RS-232/422/485 with 5V & 12V (COM 1) 1 x RS-232 with 5V & 12V (COM 3) 1 x DVI-I 1 x HDMI 4 x USB 3.0 2 x USB 2.0 2 x 10/100/1000 Mbps Ethernet 1 x Audio (Mic-in/Line-out)
Expansion Interface	2 x PCIe x8 or 2 x PCI
Touchscreen	5-wire resistive type Light transmission 79% 1 million activations (typical) at a single point
Power Supply	100 ~ 240VAC, 270W
Dimensions	311.5 mm (12.26") (W) x 111.85 mm (4.4") (D) x 250 mm (9.84") (H)
Packing Dimension	510 mm (20.08") (W) x 190 mm (7.48") (D) x 540 mm (21.26") (H)
Weight(net/gross)	5 kg (11.02 lb)/7.1 kg (15.65 lb)
Environment	Operating Temperature: 0° ~ +45°C (+32°F ~ +113°F) Storage Temperature: -40°C ~ +80°C (-40°F ~ +176°F) Relative humidity: 10 ~ 90%@40°C, non-considering Operating vibration: 1.0G, 5-500Hz, random
Certificate	CE

## Ordering Information

P1127E-871 w/ PCIe	12.1" XGA expandable industrial touch panel computer supports LGA1155 socket Intel® 3rd generation Core™ i7/ i5/i3, Xeon®, Pentium® & Celeron® processor, resistive touch screen, 2 PCIe x8 slot and 100~240VAC
P1127E-871 w/ PCI	12.1" XGA expandable industrial touch panel computer supports LGA1155 socket Intel® 3rd generation Core™ i7/ i5/i3, Xeon®, Pentium® & Celeron® processor, resistive touch screen, 2 PCI slot and 100~240VAC

\* Specification and certifications are based on options and may vary.

## Optional Accessories

82211271000E	Wireless LAN kit
82211270060E	VESA & WALL mount kit
E202003330	VM-101 (VESA ARM clamp type)
E202003329	VM-105 (VESA ARM wall-mount)

## Optional OS Installation

Windows® XP/XPe
Windows® 7/8.1
Windows® Embedded 7/8

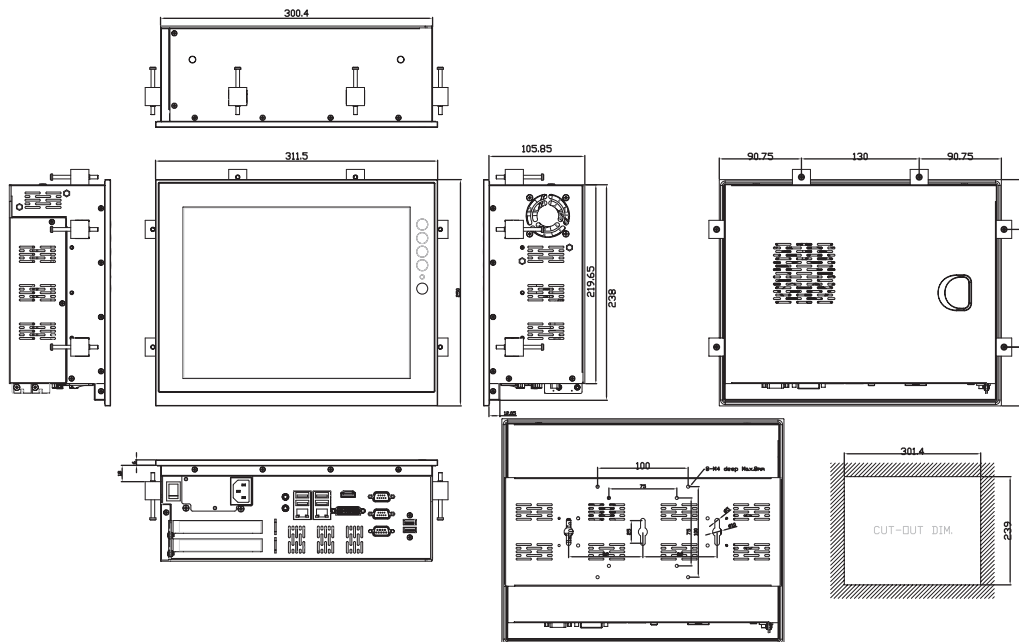


▲ Expandible design



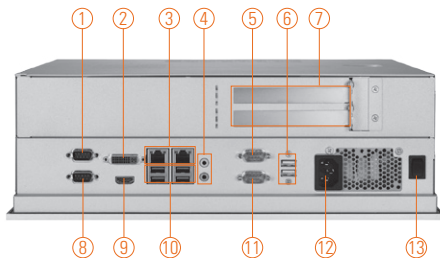
▲ Less screw design

## Dimensions



# P1157E-871

15" XGA TFT Intel® Core™ i7/i5/i3, Celeron® & Pentium® Expandable Industrial Touch Panel Computer with 2 PCIe or 2 PCI Slots



- |   |                                 |                    |
|---|---------------------------------|--------------------|
| 1. COM 1 with 5V & 12V (RS-232/422/485) | 5. COM 3 with 5V & 12V (RS-232) | 10. USB 3.0 x 4    |
| 2. DVI-I                                | 6. USB 2.0 x 2                  | 11. COM 4 (RS-232) |
| 3. Ethernet x 2                         | 7. PCIe x8 x 2 or PCI x 2       | 12. AC plug        |
| 4. Audio (MIC-in/Line-out)              | 8. COM 2 (RS-232)               | 13. Power switch   |
|   | 9. HDMI                         |                    |

## Features

- 15" XGA TFT LCD display
- LGA1155 socket 3rd & 2nd generation Intel® Core™ i7/i5/i3, Celeron® & Pentium® processor
- Intel® C216 chipset
- Easy installation: Less screw design for user's convenience
- 4 USB 3.0, 2 USB 2.0 and 4 COM ports
- Flexible expansion interface (two PCIe x8 or two PCI slots)
- Built-in speakers and optional Wi-Fi 802.11 b/g/n module
- Robust aluminum with IP65 compliant front bezel design



▲ Side view



## Introduction

The P1157E-871 is a multimedia 15" touch panel PC for kiosk application. It has a fashionable mechanism design and industrial-grade material front bezel which can avoid damage from chemical corrosion. To meet the demands of multimedia application, the P1157E-871 is powered by a high performance LGA1155 socket 3rd & 2nd generation Intel® Core™ i7/i5/i3, Pentium® & Celeron® processors with the Intel® C216 Express chipset. It features four COM ports, two Gigabit Ethernet and up to 16 GB memory of dual-channel DDR3 that delivers high computing capability for high performance-demanding applications. The industrial panel PC is most suitable for kiosk, factory and automation.

### Dual Monitor Display

The P1157E-871 supports DVI or HDMI simultaneously that features the use of dual display devices for increasing the area available for programs running on a single computer system. It not only increases larger screen viewing but also improves personal productivity.

### Expandable for 2 PCIe or 2 PCI

The P1157E-871 has 2 PCIe x8 or 2 PCI slots for expansion purpose. User can easily plug in standard half-size PCI or PCIe card for any requirement.

### Speaker and WLAN Antenna Supported

The P1157E-871 features built-in speakers for kiosk application to display multimedia content program. It also supports WLAN module antenna (optional) for wireless network connectivity.

### Friendly Less Screw Design

Removing the back cover to maintain the system in unscrewing 3 screws only that saving your time and increasing our work efficiency many times.

## Specifications

Front Bezel	Aluminum w/ IP65/NEMA 4 rugged protection	
LCD Panel	Display Type	15" XGA TFT LCD
	Brightness	350 nits
	Resolution	1024 x 768 pixels
	Viewing Angle	160°/140°
Main System	CPU	LGA1155 socket 3rd & 2nd generation Intel® Core™ i7/i5/i3, Celeron® & Pentium® processor
	Chipset	Intel® C216
	System Memory	2 x 204-pin DDR3 SO-DIMM dual channel max. up to 16 GB
	BIOS	AMI UEFI BIOS with OA 3.0 built
	Storage	1 x 3.5" or 2 x 2.5" SATA HDD
	Drive	1 x builtin slim DVD-RW (optional)
	Watchdog Timer	255 levels, 1~255 sec.

## Specifications

IO Connector	2 x RS-232 (COM 2 & COM 4) 1 x RS-232/422/485 with 5V & 12V (COM 1) 1 x RS-232 with 5V & 12V (COM 3) 1 x DVI-I 1 x HDMI 4 x USB 3.0 2 x USB 2.0 2 x 10/100/1000 Mbps Ethernet 1 x Audio (Mic-in/Line-out)
Expansion Interface	2 x PCIe x8 or 2 x PCI
Touchscreen	5-wire resistive type Light transmission 79% 1 million activations (typical) at a single point
Power Supply	100 ~ 240VAC, 270W
Dimensions	378 mm (14.88") (W) x 125.5 mm (4.94") (D) x 309 mm (12.17") (H)
Packing Dimension	610 mm (24.02") (W) x 260 mm (10.24") (D) x 590 mm (23.23") (H)
Weight(net/gross)	6.2 kg (13.67 lb)/ 9.6 kg (21.16 lb)
Environment	Operating Temperature: 0° ~ +45°C (+32°F ~ +113°F) Storage Temperature: -20°C ~ +65°C (-4°F ~ +149°F) Relative humidity: 10 ~ 90%@40°C, non-considering Operating vibration: 1.0 G, 5-500Hz, random
Certificate	CE

## Ordering Information

P1157E-871 w/ PCIe	15" XGA expandable industrial touch panel computer supports LGA1155 socket Intel® 3rd generation Core™ i7/ i5/i3, Xeon®, Pentium® & Celeron® processor, resistive touch screen, 2 PCIe x8 slot and 100~240VAC
P1157E-871 w/ PCI	15" XGA expandable industrial touch panel computer supports LGA1155 socket Intel® 3rd generation Core™ i7/ i5/i3, Xeon®, Pentium® & Celeron® processor, resistive touch screen, 2 PCI slot and 100~240VAC

\* Specification and certifications are based on options and may vary.

## Optional Accessories

82211271000E	Wireless LAN kit
8211570100E	VESA & WALL mount kit
8211570060E	Rack mount kit
72211571000E	2 x 2.5" HDD Bracket
82211570070E	P1157E-871 DVD-RW kit
E202003330	VM-101 (VESA ARM clamp type)
E202003329	VM-105 (VESA ARM wall-mount)

## Optional OS Installation

Windows® XP/XPe

Windows® 7/8.1

Windows® Embedded 7/8

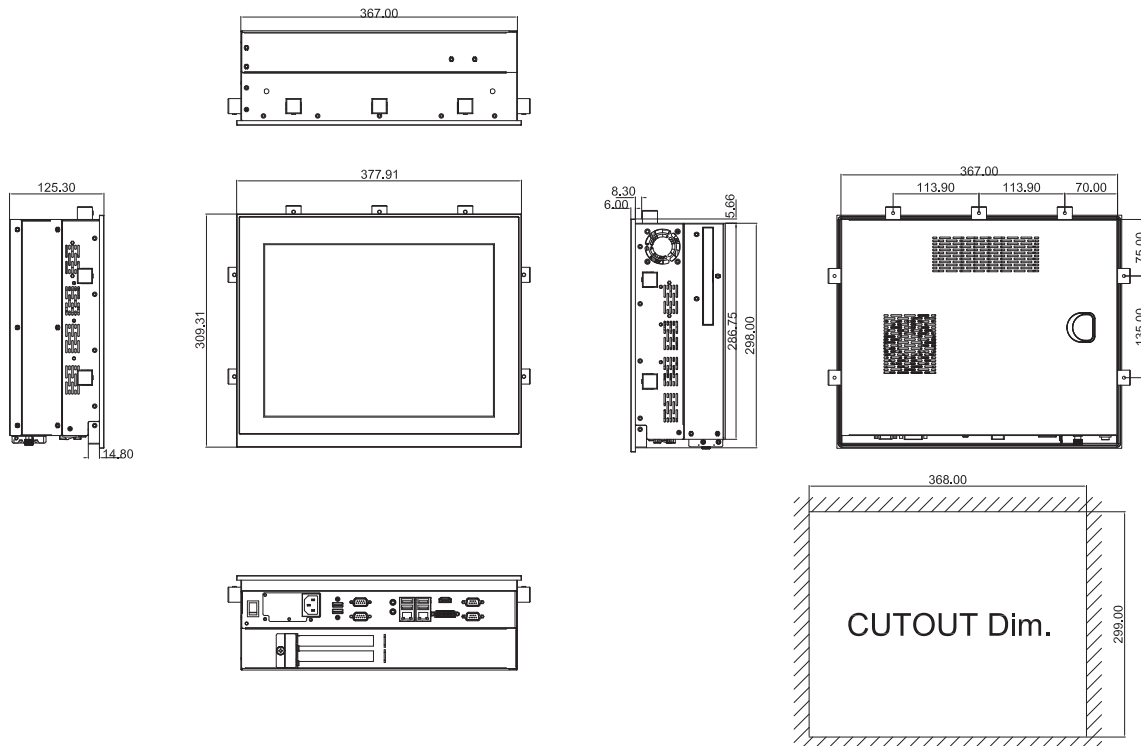


▲ Expandible design



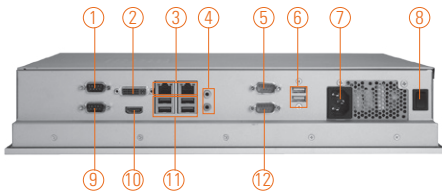
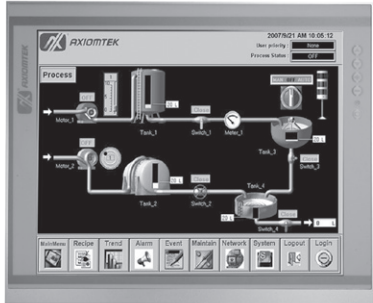
▲ Less screw design

## Dimensions



# P1157S-871

15" XGA TFT Intel® Core™ i7/i5/i3, Celeron® & Pentium® Slim Industrial Touch Panel Computer



- |   |                   |                    |
|---|-------------------|--------------------|
| 1. COM 1 with 5V & 12V (RS-232/422/485) | 6. USB 2.0 x 2    | 11. USB 3.0 x 4    |
| 2. DVI-I                                | 7. AC plug        | 12. COM 4 (RS-232) |
| 3. Ethernet x 2                         | 8. Power switch   |                    |
| 4. Audio (MIC-in/Line-out)              | 9. COM 2 (RS-232) |                    |
| 5. COM 3 with 5V & 12V (RS-232)         | 10. HDMI          |                    |

## Features

- 15" XGA TFT LCD display
- LGA1155 socket 3rd & 2nd generation Intel® Core™ i7/i5/i3, Celeron® & Pentium® processor
- Intel® Q77 chipset
- Easy installation: a less screw design for user's convenience
- 4 USB 3.0, 2 USB 2.0 and 4 COM ports
- Built-in speakers and optional Wi-Fi 802.11 b/g/n module
- Robust aluminum with IP65 compliant front bezel design



▲ Side view



## Introduction

The P1157S-871 is a multimedia 15" touch panel PC for kiosk application. It has a fashionable mechanism design and industrial-grade material front bezel which can avoid damage from chemical corrosion. To meet the demands of multimedia application, the P1157S-871 is powered by a high performance LGA1155 socket 3rd & 2nd generation Intel® Core™ i7/i5/i3, Pentium® & Celeron® processor with the Intel® Q77 Express chipset. It features four COM ports, two Gigabit Ethernet and up to 16 GB memory of dual-channel DDR3 that delivers high computing capability for high performance-demanding applications. The industrial panel PC is most suitable for kiosk, factory and automation.

### Dual Monitor Display

The P1157S-871 supports DVI or HDMI simultaneously that features the use of dual display devices for increasing the area available for programs running on a single computer system. It not only increases larger screen viewing but also improves personal productivity.

### Speaker and WLAN Antenna Supported

The P1157S-871 features built-in speakers for kiosk application to display multimedia content program. It also supports WLAN module antenna (optional) for wireless network connectivity.

### Friendly Less Screw Design

Removing the back cover to maintain the system in unscrewing 3 screws only that saving your time and increasing our work efficiency many times.

## Specifications

Front Bezel	Aluminum w/ IP65/NEMA 4 rugged protection	
LCD Panel	Display Type	15" XGA TFT LCD
	Brightness	350 nits
	Resolution	1024 x 768 pixels
	Viewing Angle	160°/140°
Main System	CPU	LGA1155 socket 3rd & 2nd generation Intel® Core™ i7/i5/i3, Celeron® & Pentium® processor
	Chipset	Intel® Q77
	System Memory	2 x 204-pin DDR3 SO-DIMM dual channel max. up to 16 GB
	BIOS	AMI UEFI BIOS with OA 3.0 built
	Storage	1 x 3.5" or 2 x 2.5" SATA HDD
	Watchdog Timer	255 levels, 1~255 sec.

## Specifications

IO Connector	2 x RS-232 (COM 2 & COM 4) 1 x RS-232/422/485 with 5V & 12V (COM 1) 1 x RS-232 with 5V & 12V (COM 3) 1 x DVI-I 1 x HDMI 4 x USB 3.0 2 x USB 2.0 2 x 10/100/1000 Mbps Ethernet 1 x Audio (Mic-in/Line-out)
Expansion Interface	N/A
Touchscreen	5-wire resistive type Light transmission 79% 1 million activations (typical) at a single point
Power Supply	100 ~ 240VAC, 270W
Dimensions	378 mm (14.88") (W) x 72.2 mm (2.84") (D) x 309 mm (12.17") (H)
Packing Dimension	610 mm (24.02") (W) x 260 mm (10.24") (D) x 590 mm (23.23") (H)
Weight(net/gross)	5.2 kg (11.46 lb)/ 7.5 kg (16.53 lb)
Environment	Operating Temperature: 0° ~ +45°C (+32°F ~ +113°F) Storage Temperature: -20°C ~ +65°C (-4°F ~ +149°F) Relative humidity: 10 ~ 90%@40°C, non-considering Operating vibration: 1.0 G, 5-500Hz, random
Certificate	CE

## Ordering Information

P1157S-871	15" XGA slim industrial touch panel computer supports LGA1155 socket Intel® 3rd generation Core™ i7/i5/i3, Pentium® & Celeron® processor, resistive touch screen and 100~240VAC
------------	---

\* Specification and certifications are based on options and may vary.

## Optional Accessories

82211271000E	Wireless LAN kit
82211570050E	VESA & WALL mount kit
82211570060E	Rack mount kit
72211571000E	2 x 2.5" HDD Bracket
E202003330	VM-101 (VESA ARM clamp type)
E202003329	VM-105 (VESA ARM wall-mount)

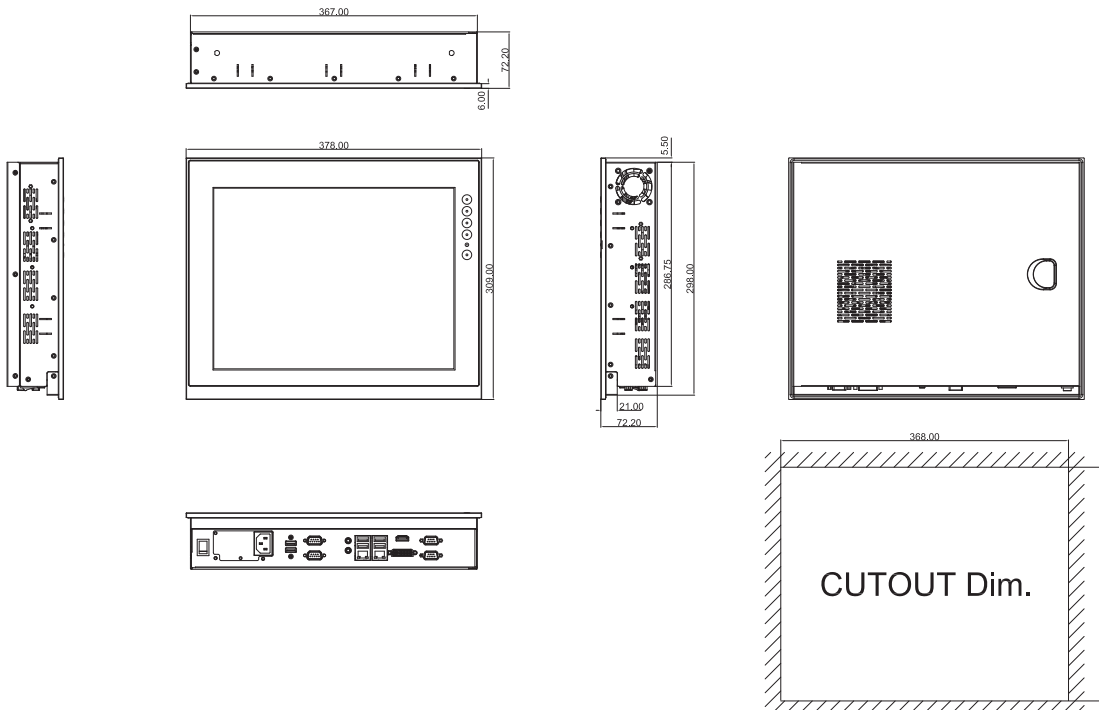
## Optional OS Installation

Windows® XP/XPe
Windows® 7/8.1
Windows® Embedded 7/8



▲ Less screw design

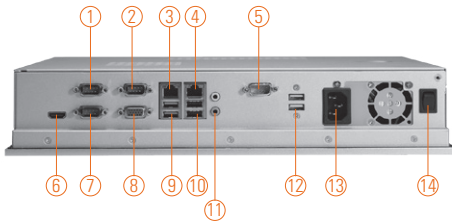
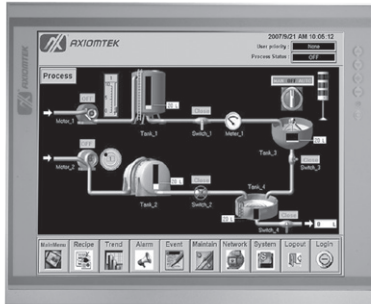
## Dimensions





# P1157S-881

15" XGA TFT 5th/4th Generation Intel® Core™ i7/i5/i3, Celeron®, Pentium® & Xeon® Processor Processor Slim Industrial Touch Panel Computer



- |   |                                 |
|---|---------------------------------|
| 1. 1 x RS-232/422/485 with 5V & 12V (COM 1) | 8. 1 x VGA                      |
| 2. 1 x RS-232/422/485 with 5V & 12V (COM 3) | 9. 2 x USB 3.0                  |
| 3. 1 x RJ45 for Gigabit Ethernet (LAN 1)    | 10. 2 x USB 2.0                 |
| 4. 1 x RJ45 for Gigabit Ethernet (LAN 2)    | 11. 1 x MIC-in, 1 x Line-out    |
| 5. 1 x RS-232 with 5V&12V (COM 4)           | 12. 2 x USB 2.0                 |
| 6. 1 x HDMI                                 | 13. 1 x AC Plug                 |
| 7. 1 x RS-232/422/485 with 5V&12V (COM 2)   | 14. 1 x switch for power on/off |



## Introduction

The P1157S-881 is a multimedia 15" touch panel PC for kiosk application. It has a fashionable mechanism design and industrial-grade material front bezel which can avoid damage from chemical corrosion. To meet the demands of multimedia application, the P1157S-881 is powered by a high performance LGA1150 socket 5th/4th generation Intel® Core™ i7/i5/i3 Celeron® & Pentium® processor with the Intel® H81 Express chipset (Broadwell/Haswell). It features four COM ports, two Gigabit Ethernet and up to 16 GB memory of dual-channel DDR3 that delivers high computing capability for high performance-demanding applications. The industrial panel PC is most suitable for kiosk, factory and automation.

### Dual Monitor Display

The P1157S-881 supports VGA or HDMI simultaneously that features the use of dual display devices for increasing the area available for programs running on a single computer system. It not only increases larger screen viewing but also improves personal productivity.

### Speaker and WLAN Antenna Supported

The P1157S-881 features built-in speakers for kiosk application to display multimedia content program. It also supports WLAN module antenna (optional) for wireless network connectivity.

### Friendly Less Screw Design

Removing the back cover to maintain the system in unscrewing 3 screws only that saving your time and increasing our work efficiency many times.

## Features

- 15" XGA TFT LCD display
- LGA1150 socket 5th/4th generation Intel® Core™ i7/i5/i3 Celeron® & Pentium® processor (Broadwell/Haswell)
- Intel® H81 chipset
- Easy installation: a less screw design for user's convenience
- 2 USB 3.0, 4 USB 2.0 and 4 COM ports
- Built-in speakers and optional Wi-Fi 802.11 b/g/n module
- Robust aluminum with IP65 compliant front bezel design
- The best C/P ratio for HMI solution



▲ Side view

## Specifications

Front Bezel	Aluminum with IP65/NEMA 4 rugged protection	
LCD Panel	Display Type	15" XGA TFT LCD
	Brightness	250 nits
	Resolution	1024 x 768 pixels
	Viewing Angle	160°/140°
Main System	CPU	LGA1150 socket 5th/4th generation Intel® Core™ i7/i5/i3 Celeron® & Pentium® processor (Broadwell/Haswell)
	Chipset	Intel® H81
	System Memory	2 x 204-pin DDR3 SO-DIMM dual channel max. up to 16 GB
	BIOS	AMI UEFI BIOS with OA 3.0 built
	Storage	1 x 3.5" or 2 x 2.5" SATA HDD
	Watchdog Timer	255 levels, 1~255 sec.

## Specifications

IO Connector	3 x RS-232/422/485 with 5V & 12V 1 x RS-232 with 5V & 12V 1 x VGA 1 x HDMI 2 x USB 3.0 4 x USB 2.0 2 x 10/100/1000 Mbps Ethernet 1 x Audio (Mic-in/Line-out)
Expansion Interface	N/A
Touchscreen	5-wire resistive type Light transmission 79% 1 million activations (typical) at a single point
Power Supply	100 ~ 240VAC, 200W
Dimensions	378 mm (14.88") (W) x 72.2 mm (2.84") (D) x 309 mm (12.17") (H)
Packing Dimension	610 mm (24.02") (W) x 260 mm (10.24") (D) x 590 mm (23.23") (H)
Weight(net/gross)	5.4 kg (11.88 lb)/ 7.8 kg (17.16 lb)
Environment	Operating Temperature: 0° ~ +45°C (+32°F ~ +113°F) Storage Temperature: -20°C ~ +65°C (-4°F ~ +149°F) Relative humidity: 10 ~ 90%@40°C, non-considering Operating vibration: 1.0 G, 5-500Hz, random
Certificate	CE

## Ordering Information

P1157S-881	15" XGA slim industrial touch panel computer supports LGA1150 socket Intel® 4th generation Core™ i7/i5/i3, Pentium® & Celeron® processor, resistive touch screen and 100~240VAC
------------	---

\* Specification and certifications are based on options and may vary.

## Optional Accessories

82211570050E	VESA & WALL mount kit
82211570060E	Rack mount kit
72211571000E	2 x 2.5" HDD Bracket
E202003330	VM-101 (VESA ARM clamp type)
E202003329	VM-105 (VESA ARM wall-mount)
82211271000E	Wireless LAN kit

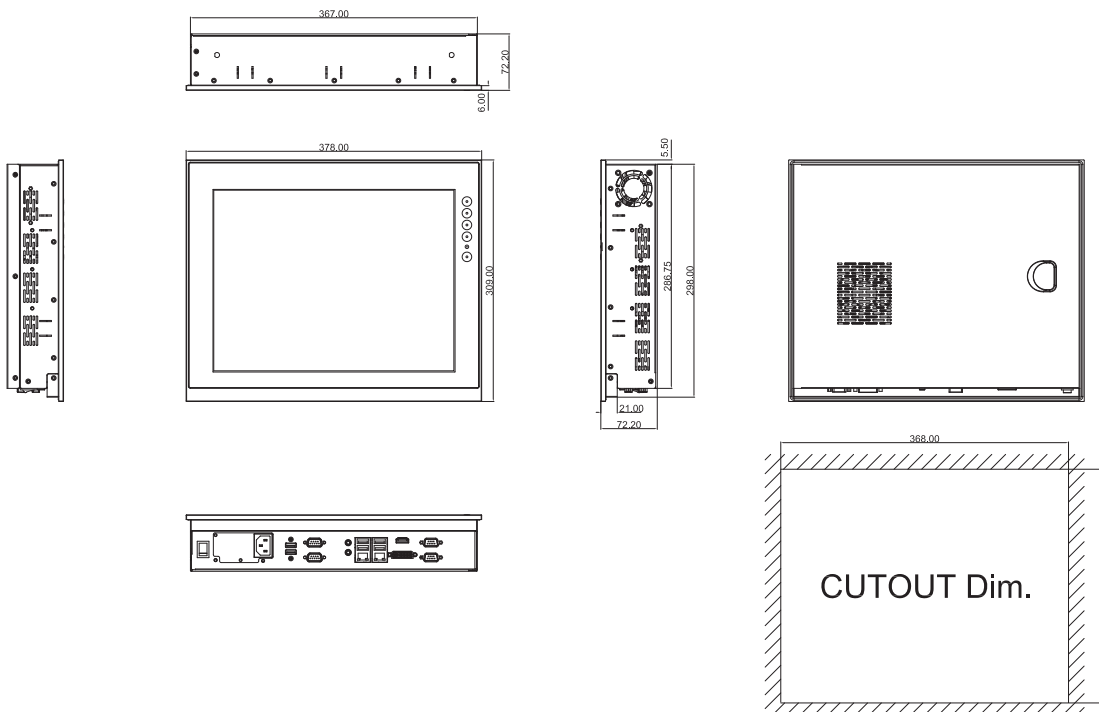
## Optional OS Installation

Windows® 7/8.1
Windows® Embedded 7/8



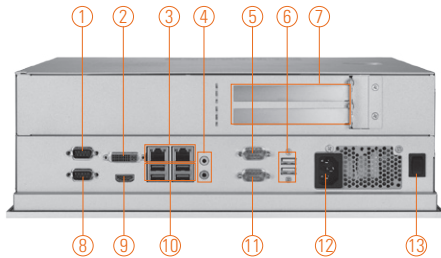
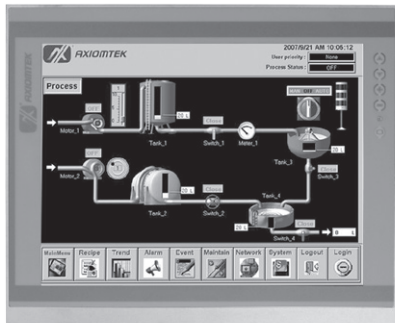
▲ Less screw design

## Dimensions



# P1177E-871

17" SXGA TFT Intel® Core™ i7/i5/i3,  
Celeron®, Pentium® & Xeon® Processor  
Expandable Industrial Touch Panel Computer  
with 2 PCIe or 2 PCI Slots



- |   |                                 |                    |
|---|---------------------------------|--------------------|
| 1. COM 1 with 5V & 12V (RS-232/422/485) | 5. COM 3 with 5V & 12V (RS-232) | 10. USB 3.0 x 4    |
| 2. DVI-I                                | 6. USB 2.0 x 2                  | 11. COM 4 (RS-232) |
| 3. Ethernet x 2                         | 7. PCIe x8 x 2 or PCI x 2       | 12. AC plug        |
| 4. Audio (MIC-in/Line-out)              | 8. COM 2 (RS-232)               | 13. Power switch   |
|   | 9. HDMI                         |                    |



## Introduction

The P1177E-871 is a multimedia 17" touch panel PC for kiosk application. It has a fashionable mechanism design and industrial-grade material front bezel which can avoid damage from chemical corrosion. To meet the demands of multimedia application, the P1177E-871 is powered by a high performance 3rd & 2nd generation Intel® Core™ i7/i5/i3, Celeron®, Pentium® & Xeon® processors with the Intel® C216 Express chipset. It features four COM ports, two Gigabit Ethernet and up to 16 GB memory of dual-channel DDR3 that delivers high computing capability for high performance-demanding applications. The industrial panel PC is most suitable for kiosk, factory and automation.

### Dual Monitor Display

The P1177E-871 supports DVI or HDMI simultaneously that features the use of dual display devices for increasing the area available for programs running on a single computer system. It not only increases larger screen viewing but also improves personal productivity.

### Expandable for 2 PCIe or 2 PCI

The P1177E-871 has 2 PCIe x8 or 2 PCI ports for expansion purpose. User can easily plug in standard half-size PCI or PCIe card for any requirement.

### Speaker and WLAN Antenna Supported

The P1177E-871 features built-in speakers for kiosk application to display multimedia content program. It also supports WLAN module antenna (optional) for wireless network connectivity.

### Friendly Less Screw Design

Removing the back cover to maintain the system in unscrewing 3 screws only that saving your time and increasing our work efficiency many times.

## Features

- 17" SXGA TFT LCD display
- LGA1155 socket 3rd & 2nd generation Intel® Core™ i7/i5/i3, Celeron®, Pentium® & Xeon® processor
- Intel® C216 chipset
- Easy installation: a less screw design for user's convenience
- 4 USB 3.0, 2 USB 2.0 and 4 COM ports
- Flexible expansion interface (two PCIe x8 or two PCI slots)
- Built-in speakers and optional Wi-Fi 802.11 b/g/n module
- Robust aluminum with IP65 compliant front bezel design



▲ Side view

## Specifications

Front Bezel	Aluminum w/ IP65/NEMA 4 rugged protection	
LCD Panel	Display Type	17" SXGA TFT LCD
	Brightness	350 nits
	Resolution	1280 x 1024 pixels
	Viewing Angle	170°/160°
Main System	CPU	LGA1155 socket 3rd & 2nd generation Intel® Core™ i7/i5/i3, Celeron®, Pentium® & Xeon® processor
	Chipset	Intel® C216
	System Memory	2 x 204-pin DDR3 SO-DIMM dual channel max. up to 16 GB
	BIOS	AMI UEFI BIOS with OA 3.0 built
	Storage	1 x 3.5" or 2 x 2.5" SATA HDD
	Drive	1 x built-in slim DVD-RW (optional)
	Watchdog Timer	255 levels, 1~255 sec.

## Specifications

IO Connector	2 x RS-232 (COM 2 & COM 4) 1 x RS-232/422/485 with 5V & 12V (COM 1) 1 x RS-232 with 5V & 12V (COM 3) 1 x DVI-I 1 x HDMI 4 x USB 3.0 2 x USB 2.0 2 x 10/100/1000 Mbps Ethernet 1 x Audio (Mic-in/Line-out)
Expansion Interface	2 x PCIe x8 or 2 x PCI
Touchscreen	5-wire resistive type Light transmission 79% 1 million activations (typical) at a single point
Power Supply	100 ~ 240VAC, 270W
Dimensions	410 mm (16.14") (W) x 131 mm (5.16") (D) x 338 mm (13.3") (H)
Packing Dimension	610 mm (24.02") (W) x 260 mm (10.24") (D) x 590 mm (23.23") (H)
Weight(net/gross)	8.2 kg (18.078 lb)/12 kg (26.46 lb)
Environment	Operating Temperature: 0° ~ +45°C (+32°F ~ +113°F) Storage Temperature: -20°C ~ +60°C (-4°F ~ +140°F) Relative humidity: 10 ~ 90%@40°C, non-considering Operating vibration: 1.0G, 5-500Hz, random
Certificate	CE

## Ordering Information

P1177E-871 w/ PCIe	17" SXGA expandable industrial touch panel computer supports LGA1155 socket Intel® 3rd generation Core™ i7/ i5/i3, Xeon®, Pentium® & Celeron® processor, resistive touch screen and 2 PCIe x8 slot, 100~240VAC
P1177E-871 w/ PCI	17" SXGA expandable industrial touch panel computer supports LGA1155 socket Intel® 3rd generation Core™ i7/ i5/i3, Xeon®, Pentium® & Celeron® processor, resistive touch screen and 2 PCI slot, 100~240VAC

\* Specification and certifications are based on options and may vary.

## Optional Accessories

82211271000E	Wireless LAN kit
82011750130E	2 x 2.5" HDD kit
8211770120E	VESA & Wall Mount kit
82211770070E	Rack mount kit
82211770110E	P1177E-871 DVD-RW Kit
E202003330	VM-101 (VESA ARM clamp type)
E202003329	VM-105 (VESA ARM wall-mount)

## Optional OS Installation

Windows® XP/XPe  
Windows® 7/8.1  
Windows® Embedded 7/8

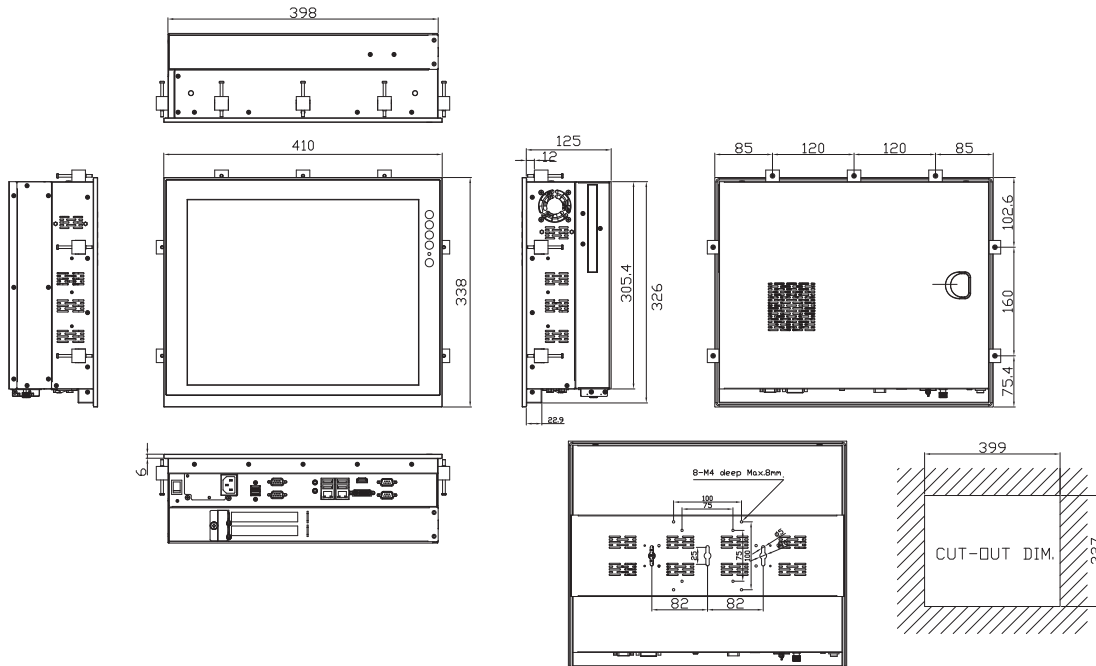


▲ Expanelable design



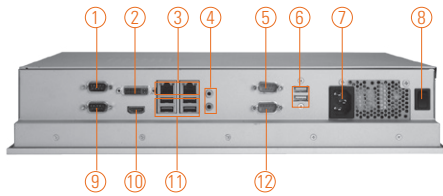
▲ Less screw design

## Dimensions



# P1177S-871

17" SXGA TFT Intel® Core™ i7/i5/i3,  
Celeron® & Pentium® Processor Slim  
Industrial Touch Panel Computer



- |   |                   |                    |
|---|-------------------|--------------------|
| 1. COM 1 with 5V & 12V (RS-232/422/485) | 6. USB 2.0 x 2    | 11. USB 3.0 x 4    |
| 2. DVI-I                                | 7. AC plug        | 12. COM 4 (RS-232) |
| 3. Ethernet x 2                         | 8. Power switch   |                    |
| 4. Audio (MIC-in/Line-out)              | 9. COM 2 (RS-232) |                    |
| 5. COM 3 with 5V & 12V (RS-232)         | 10. HDMI          |                    |



## Introduction

The P1177S-871 is a multi-media 17" touch panel PC for kiosk application. It has a fashionable mechanism design and industrial-grade material front bezel which can avoid damage from chemical corrosion. To meet the demands of multimedia application, the P1177S-871 is powered by the high performance LGA1155 socket 3rd & 2nd generation Intel® Core™ i7/i5/i3, Celeron® & Pentium® processor with Intel® Q77 Express chipset. It features four COM ports, two Gigabit Ethernet and up to 16 GB memory of dual-channel DDR3 that delivers high computing capability for high performance-demanding applications. The industrial panel PC is most suitable for kiosk, factory and automation fields.

### Dual display

The P1177S-871 supports DVI or HDMI simultaneously that features the use of dual display devices for increasing the area available for programs running on a single computer system. It not only increases larger screen viewing but also improves personal productivity.

### Speaker and WLAN Antenna Supported

The P1177S-871 features built-in speakers for kiosk application to display multimedia content program. It also supports WLAN module (optional) antenna for wireless network connectivity.

### Friendly Less Screw Design

Removing the back cover to maintain the system in unscrewing 3 screws only that saving your time and increasing our work efficiency many times.

## Features

- 17" SXGA TFT LCD display
- LGA1155 socket 3rd & 2nd generation Intel® Core™ i7/i5/i3, Celeron® & Pentium® processor
- Intel® Q77 chipset
- Easy installation: Less screw design for user's convenience
- 4 USB 3.0, 2 USB 2.0 and 4 COM ports
- Built-in speakers and optional Wi-Fi 802.11 b/g/n module
- Robust aluminum with IP65 compliant front bezel design



▲ Side view

## Specifications

Front Bezel	Aluminum w/ IP65/NEMA 4 rugged protection	
LCD Panel	Display Type	17" SXGA TFT LCD
	Brightness	350 nits
	Resolution	1280 x 1024 pixels
	Viewing Angle	170°/160°
Main System	CPU	LGA1155 socket 3rd & 2nd generation Intel® Core™ i7/i5/i3, Celeron® & Pentium® processor
	Chipset	Intel® Q77
	System Memory	2 x 204-pin DDR3 SO-DIMM dual channel max. up to 16 GB
	BIOS	AMI UEFI BIOS with OA 3.0 built
	Storage	1 x 3.5" or 2 x 2.5" SATA HDD
	Watchdog Timer	255 levels, 1~255 sec.

## Specifications

IO Connector	2 x RS-232 (COM 2 & COM 4) 1 x RS-232/422/485 with 5V & 12V (COM 1) 1 x RS-232 with 5V & 12V (COM 3) 1 x DVI-I 1 x HDMI 4 x USB 3.0 2 x USB 2.0 2 x 10/100/1000 Mbps Ethernet 1 x Audio (Mic-in/Line-out)
Expansion Interface	N/A
Touchscreen	5-wire resistive type Light transmission 79% 1 million activations (typical) at a single point
Power Supply	100 ~ 240VAC, 270W
Dimensions	410 mm (16.14") (W) x 80 mm (3.15") (D) x 338 mm (13.3") (H)
Packing Dimension	610 mm (24.02") (W) x 260 mm (10.24") (D) x 590 mm (23.23") (H)
Weight(net/gross)	7 kg (15.43 lb)/ 10.8 kg (23.8 lb)
Environment	Operating Temperature: 0° ~ +45°C (+32°F ~ +113°F) Storage Temperature: -20°C ~ +60°C (-4°F ~ +140°F) Relative humidity: 10 ~ 95%@40°C, non-considering Operating vibration: 1.0G, 5-500Hz, random
Certificate	CE

## Ordering Information

P1177S-871	17" SXGA slim industrial touch panel computer supports LGA1155 socket Intel® 3rd generation Core™ i7/i5/i3, Pentium® & Celeron® processor, resistive touch screen and 100~240VAC
------------	--

\* Specification and certifications are based on options and may vary.

## Optional Accessories

82211271000E	Wireless LAN kit
82011750130E	2 x 2.5" HDD Kit
82211770060E	VESA & WALL mount kit
82211770070E	Rack mount kit
E202003330	VM-101 (VESA ARM clamp type)
E202003329	VM-105 (VESA ARM wall-mount)

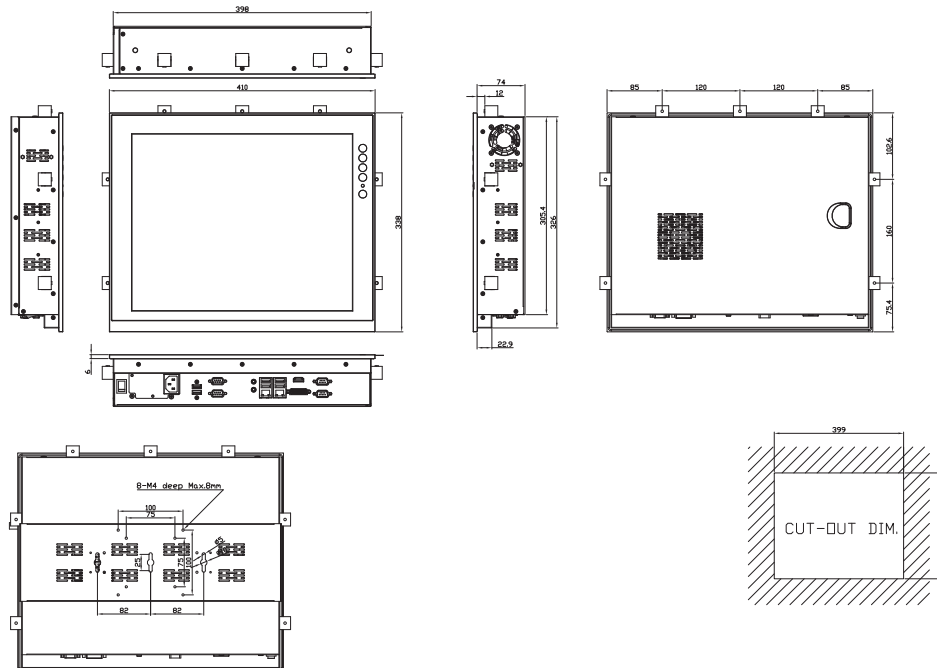
## Optional OS Installation

Windows® XP/XPe
Windows® 7/8.1
Windows® Embedded 7/8



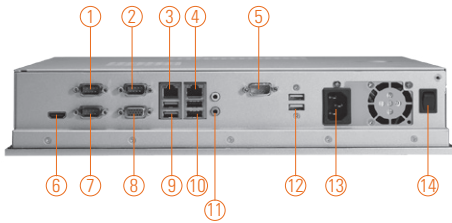
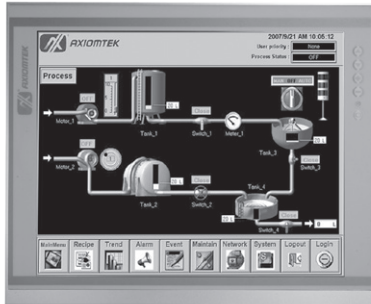
▲ Less screw design

## Dimensions



# P1177S-881

17" SXGA TFT 5th/4th Generation Intel® Core™ i7/i5/i3, Celeron® & Pentium® Processor Slim Industrial Touch Panel Computer



- |   |                                 |
|---|---------------------------------|
| 1. 1 x RS-232/422/485 with 5V & 12V (COM 1) | 8. 1 x VGA                      |
| 2. 1 x RS-232/422/485 with 5V & 12V (COM 3) | 9. 2 x USB 3.0                  |
| 3. 1 x RJ45 for Gigabit Ethernet (LAN1)     | 10. 2 x USB 2.0                 |
| 4. 1 x RJ45 for Gigabit Ethernet (LAN2)     | 11. 1 x MIC-in, 1 x Line-out    |
| 5. 1 x RS-232 with 5V&12V (COM4)            | 12. 2 x USB 2.0                 |
| 6. 1 x HDMI                                 | 13. 1 x AC Plug                 |
| 7. 1 x RS-232/422/485 with 5V&12V (COM 2)   | 14. 1 x switch for power on/off |



## Introduction

The P1177S-881 is a multimedia 17" touch panel PC for kiosk application. It has a fashionable mechanism design and industrial-grade material front bezel which can avoid damage from chemical corrosion. To meet the demands of multimedia application, the P1177S-881 is powered by a high performance LGA1150 socket 5th/4th generation Intel® Core™ i7/i5/i3, Celeron® & Pentium® processor with the Intel® H81 Express chipset (Broadwell/Haswell). It features four COM ports, two Gigabit Ethernet and up to 16 GB memory of dual-channel DDR3 that delivers high computing capability for high performance-demanding applications. The industrial panel PC is most suitable for kiosk, factory and automation.

### Dual Monitor Display

The P1177S-881 supports VGA or HDMI simultaneously that features the use of dual display devices for increasing the area available for programs running on a single computer system. It not only increases larger screen viewing but also improves personal productivity.

### Speaker and WLAN Antenna Supported

The P1177S-881 features built-in speakers for kiosk application to display multimedia content program. It also supports WLAN module antenna (optional) for wireless network connectivity.

### Friendly Less Screw Design

Removing the back cover to maintain the system in unscrewing 3 screws only that saving your time and increasing our work efficiency many times.

## Features

- 17" SXGA TFT LCD display
- LGA1150 socket 5th/4th generation Intel® Core™ i7/i5/i3, Celeron® & Pentium® processor (Broadwell/Haswell)
- Intel® H81 chipset
- Easy installation: Less screw design for user's convenience
- 2 USB 3.0, 4 USB 2.0 and 4 COM ports
- Built-in speakers and optional Wi-Fi 802.11 b/g/n module
- Robust aluminum with IP65 compliant front bezel design
- The best C/P ratio for HMI solution



▲ Side view

## Specifications

Front Bezel	Aluminum with IP65/NEMA 4 rugged protection	
LCD Panel	Display Type	17" SXGA TFT LCD
	Brightness	250 nits
	Resolution	1280 x 1024 pixels
	Viewing Angle	170°/160°
Main System	CPU	LGA1150 socket 5th/4th generation Intel® Core™ i7/i5/i3, Celeron® & Pentium® processor (Broadwell/Haswell)
	Chipset	Intel® H81
	System Memory	2 x 204-pin DDR3 SO-DIMM dual channel max. up to 16 GB
	BIOS	AMI UEFI BIOS with OA 3.0 built
	Storage	1 x 3.5" or 2 x 2.5" SATA HDD
	Watchdog Timer	255 levels, 1~255 sec.

## Specifications

IO Connector	3 x RS-232/422/485 with 5V & 12V 1 x RS-232 with 5V & 12V 1 x VGA 1 x HDMI 2 x USB 3.0 4 x USB 2.0 2 x 10/100/1000 Mbps Ethernet 1 x Audio (Mic-in/Line-out)
Expansion Interface	N/A
Touchscreen	5-wire resistive type Light transmission 79% 1 million activations (typical) at a single point
Power Supply	100 ~ 240VAC, 200W
Dimensions	410 mm (16.14") (W) x 80 mm (3.15") (D) x 338 mm (13.3") (H)
Packing Dimension	610 mm (24.02") (W) x 260 mm (10.24") (D) x 590 mm (23.23") (H)
Weight (net/gross)	6.6kg (14.55lb) / 10.6kg (23.37lb)
Environment	Operating Temperature: 0° ~ +45°C (+32°F ~ +113°F) Storage Temperature: -20°C ~ +65°C (-4°F ~ +149°F) Relative humidity: 10 ~ 90%@40°C, non-considering Operating vibration: 1.0 G, 5-500Hz, random
Certificate	CE

## Ordering Information

P1177S-881	17" SXGA slim industrial touch panel computer supports LGA1150 socket Intel® 4th generation Core™ i7/i5/i3, Pentium® & Celeron® processor, resistive touch screen and 100~240VAC
------------	--

\* Specification and certifications are based on options and may vary.

## Optional Accessories

82211770060E	VESA & WALL mount kit
82211770070E	Rack mount kit
82011750130E	2 x 2.5" HDD Bracket
E202003330	VM-101 (VESA ARM clamp type)
E202003329	VM-105 (VESA ARM wall-mount)
82211271000E	Wireless LAN kit

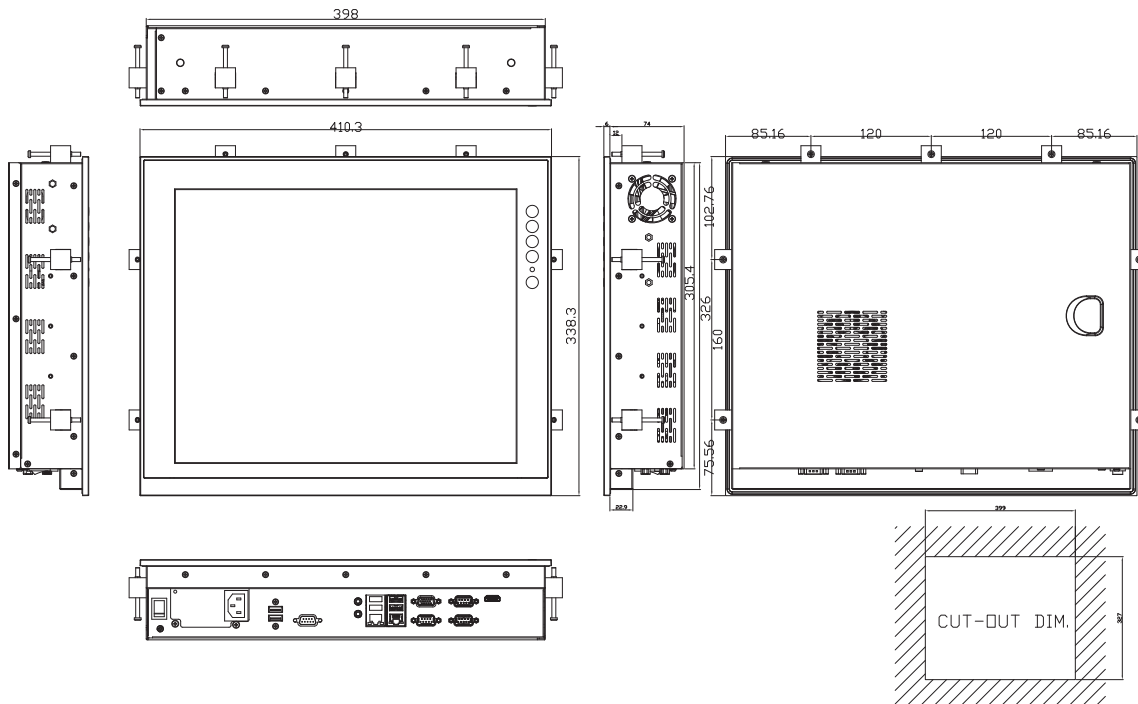
## Optional OS Installation

Windows®7/8.1
Windows® Embedded 7/8



▲ Less screw design

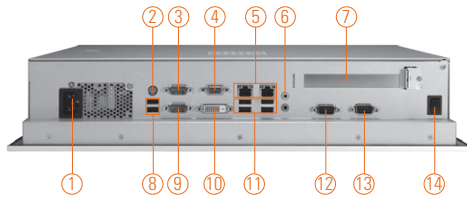
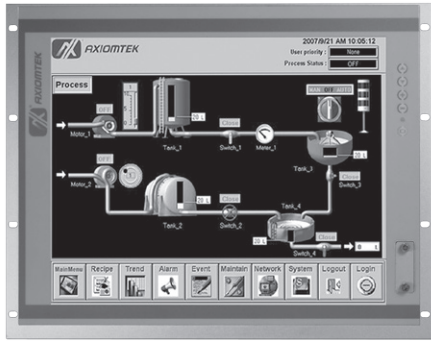
## Dimensions





# P1197E-861

19" SXGA TFT Intel® Core™ i7/i5/i3, Celeron® & Pentium® Expandable Industrial Touch Panel Computer with 1 PCI or 1 PCIe Slot



- |                               |                            |                       |
|-------------------------------|----------------------------|-----------------------|
| 1. AC Plug                    | 6. Audio (Mic-in/Line-out) | 11. 4 x USB 2.0       |
| 2. PS2 Keyboard & Mouse combo | 7. 1 x PCIe x 4 or 1 x PCI | 12. 1 x RS-232 (COM3) |
| 3. 1 x RS-232/422/485 (COM1)  | 8. 2 x USB 2.0             | 13. 1 x RS-232 (COM4) |
| 4. 1 x VGA                    | 9. 1 x RS-232 (COM2)       | 14. Power Switch      |
| 5. Ethernet x2                | 10. 1 x DVI-D              |                       |



## Introduction

The P1197E-861 is a multimedia 19" touch panel PC for kiosk application. It has a fashionable mechanism design and industrial-grade material front bezel which can avoid damage from chemical corrosion. To meet the demands of multimedia application, the P1197E-861 is powered by a high performance LGA1155 socket 3rd & 2nd generation Intel® Core™ processor with the Intel® H61 Express chipset. It features four COM ports, two Gigabit Ethernet and up to 16 GB memory of dual-channel DDR3 that delivers high computing capability for high performance-demanding applications. The industrial touch panel PC is most suitable for kiosk, factory and automation.

### Expandable for 1 PCIe or 1 PCI

The P1197E-861 has 1 PCIe x4 or 1 PCI slot for expansion purpose. User can easily plug in standard half-size PCI or PCIe card for any requirement.

### Speaker and WLAN Antenna Supported

The P1197E-861 features built-in speakers for kiosk application to display multimedia content program. It also supports WLAN module antenna (optional) for wireless network connectivity.

### SATA HDD Trays for Easy Maintenance

Without the complicated steps, users can maintain hard drive in 2 steps that make the work more efficiency.

### Friendly Less Screw Design

Removing the back cover to maintain the system in unscrewing 3 screws only that saving your time and increasing our work efficiency many times.

## Features

- 19" SXGA TFT LCD display
- LGA1155 socket 3rd & 2nd generation Intel® Core™ i7/i5/i3, Celeron® & Pentium® processor
- Intel® H61 chipset
- Easy installation: Less screw design for user's convenience
- 6 USB 2.0 (back), 2 USB 2.0 (front) and 4 COM ports
- Flexible expansion interface (PCIe x4 or PCI slot)
- Built-in speakers and optional Wi-Fi 802.11 b/g/n module
- Robust aluminum with IP65 compliant front bezel design



▲ HDD easy maintenance

## Specifications

Front Bezel	Aluminum w/ IP65/NEMA 4 rugged protection	
LCD Panel	Display Type	19" SXGA TFT LCD
	Brightness	350 nits
	Resolution	1280 x 1024 pixels
	Viewing Angle	170°/160°
Main System	CPU	LGA1155 socket 3rd & 2nd generation Intel® Core™ i7/i5/i3, Celeron® & Pentium® processor
	Chipset	Intel® H61
	System Memory	2 x 204-pin DDR3 SO-DIMM dual channel max. up to 16 GB
	BIOS	AMI UEFI BIOS with OA 3.0 built
	Storage	2 x 2.5" SATA HDD
	Drive	1 x builtin slim DVD-RW (optional)
	Watchdog Timer	255 levels, 1-255 sec.

## Specifications

IO Connector	3 x RS-232 (COM 2-4) 1 x RS-232/422/485 (COM 1) 1 x RS-232 with 5V & 12V (COM 3) 1 x DVI-D 1 x VGA 6 x USB 2.0 (back) 2 x USB 2.0 (front) 2 x 10/100/1000 Mbps Ethernet 1 x Audio (Mic-in/Line-out)
Expansion Interface	1 x PCIe x4 or 1 x PCI
Touchscreen	5-wire resistive type Light transmission 79% 1 million activations (typical) at a single point
Power Supply	100 ~ 240VAC, 270W
Dimensions	469 mm (18.46") (W) x 94.7 mm (3.73") (D) x 380.8 mm (14.99") (H)
Packing Dimension	615 mm (24.21") (W) x 250 mm (9.84") (D) x 585 mm (23.03") (H)
Weight(net/gross)	8 kg (17.64 lb)/ 10.4 kg (22.93 lb)
Environment	Operating Temperature: 0° ~ +45°C (+32°F ~ +113°F) Storage Temperature: -20°C ~ +65°C (-4°F ~ +149°F) Relative humidity: 10 ~ 90% @ 40°C, non-considering Operating vibration: 1.0G, 5-500Hz, random
Certificate	CE

## Ordering Information

P1197E-861 w/ PCIe	19" SXGA expandable industrial touch panel computer supports LGA1155 socket Intel® 3rd & 2nd generation Core™ i7/i5/i3, Pentium® & Celeron® processor, resistive touch screen and 1 PCIe x4 slot, 100-240VAC
P1197E-861 w/ PCI	19" SXGA expandable industrial touch panel computer supports LGA1155 socket Intel® 3rd & 2nd generation Core™ i7/i5/i3, Pentium® & Celeron® processor, resistive touch screen and 1 PCI slot, 100-240VAC

\* Specification and certifications are based on options and may vary.

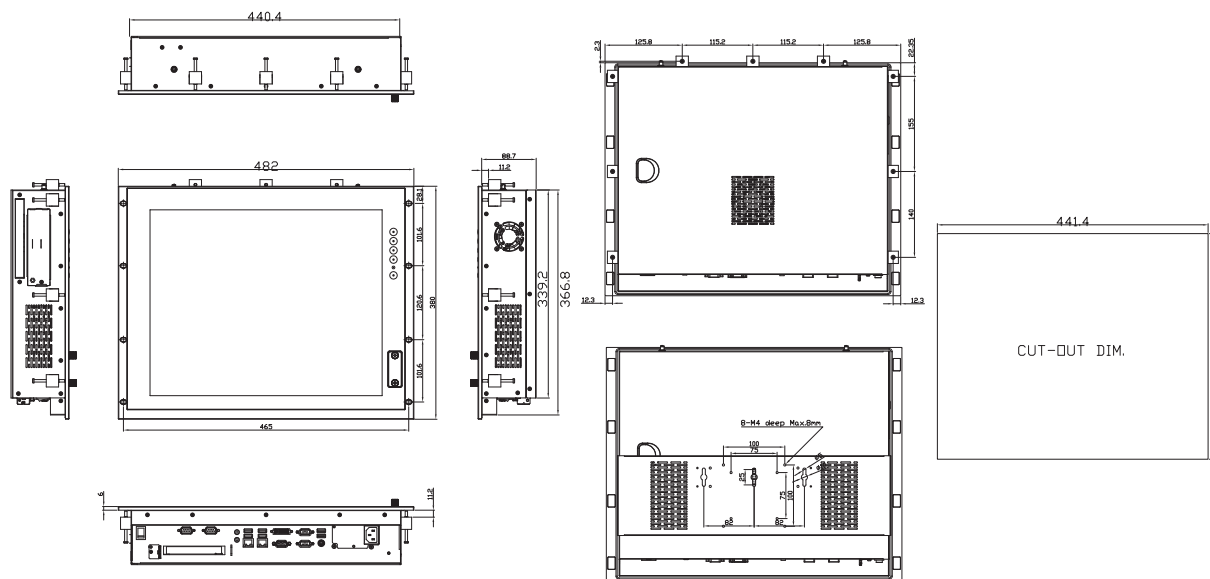
## Optional Accessories

82211970060E	DVD-RW kit
82211970070E	VESA & wall mount kit
82231570160E	Wireless LAN kit
E202003330	VM-101 (VESA ARM clamp type)
E202003329	VM-105 (VESA ARM wall-mount)

## Optional OS Installation

Windows® XP/XPe  
Windows® 7/8.1  
Windows® Embedded 7/8

## Dimensions



Архангельск (8182)63-90-72  
Астана +7(7172)727-132  
Белгород (4722)40-23-64  
Брянск (4832)59-03-52  
Владивосток (423)249-28-31  
Волгоград (844)278-03-48  
Вологда (8172)26-41-59  
Воронеж (473)204-51-73  
Екатеринбург (343)384-55-89  
Иваново (4932)77-34-06  
Ижевск (3412)26-03-58  
Казань (843)206-01-48

Калининград (4012)72-03-81  
Калуга (4842)92-23-67  
Кемерово (3842)65-04-62  
Киров (8332)68-02-04  
Краснодар (861)203-40-90  
Красноярск (391)204-63-61  
Курск (4712)77-13-04  
Липецк (4742)52-20-81  
Магнитогорск (3519)55-03-13  
Москва (495)268-04-70  
Мурманск (8152)59-64-93  
Набережные Челны (8552)20-53-41

Нижний Новгород (831)429-08-12  
Новокузнецк (3843)20-46-81  
Новосибирск (383)227-86-73  
Орел (4862)44-53-42  
Оренбург (3532)37-68-04  
Пенза (8412)22-31-16  
Пермь (342)205-81-47  
Ростов-на-Дону (863)308-18-15  
Рязань (4912)46-61-64  
Самара (846)206-03-16  
Санкт-Петербург (812)309-46-40  
Саратов (845)249-38-78

Смоленск (4812)29-41-54  
Сочи (862)225-72-31  
Ставрополь (8652)20-65-13  
Тверь (4822)63-31-35  
Томск (3822)98-41-53  
Тула (4872)74-02-29  
Тюмень (3452)66-21-18  
Ульяновск (8422)24-23-59  
Уфа (347)229-48-12  
Челябинск (351)202-03-61  
Череповец (8202)49-02-64  
Ярославль (4852)69-52-93